

HIF1AN RABBIT MAB

Cat.#: N263362

Product Name: Anti-HIF1AN Rabbit Monoclonal Antibody

Synonyms: FIH 1; FIH1; HIF1AN

UNIPROT ID: Q9NWT6

Background: Hydroxylates HIF-1 alpha at 'Asp-803' in the C-terminal transactivation domain (CAD). Functions as an oxygen sensor and, under normoxic conditions, the hydroxylation prevents interaction of HIF-1 with transcriptional coactivators including Cbp/p300-interacting transactivator.

Immunogen: A synthetic peptide of human HIF1AN/FIH-1

Applications: WB,IHC-F,IHC-P,ICC/IF

Recommended Dilutions: WB: 1/500-1/1000 IHC: 1/50-1/100 IF: 1/50-1/200

Host Species: Rabbit

Clonality: Rabbit Monoclonal

Clone ID: R03-2B3

MW: Calculated MW: 40 kDa; Observed MW: 40 kDa

Isotype: IgG

Purification: Affinity Purified

Species Reactivity: Human

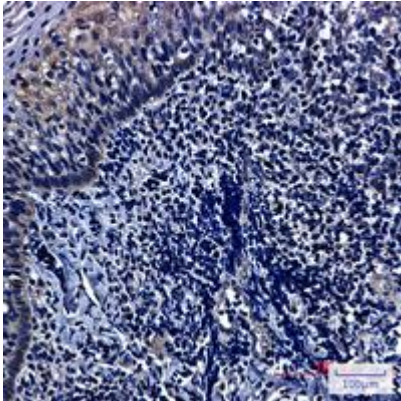
Conjugation: Unconjugated

Modification: Unmodified

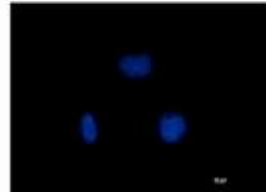
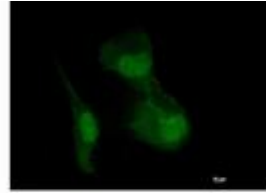
Constituents: PBS (without Mg²⁺ and Ca²⁺), pH 7.3 containing 50% glycerol, 0.5% BSA and 0.02% sodium azide

Research Areas: Hypoxia Signal Transduction Hypoxia-Inhibition

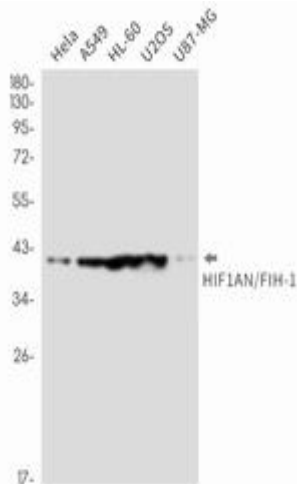
Storage & Shipping: Store at -20°C. Avoid repeated freezing and thawing



Immunohistochemistry analysis of paraffin-embedded Human tonsil tissue using HIF1AN/FIH1 antibody. High-pressure and temperature Sodium Citrate pH 6.0 was used for antigen retrieval.



Immunocytochemistry analysis of HIF1AN (green) in HT-1080 using HIF1AN antibody, and DAPI (blue).



Western blot analysis of HIF1AN/FIH1 in HeLa, A549, HL-60, U2OS, U87-MG lysates using HIF1AN/FIH1 antibody.