

## HIC1 RABBIT PAB

**Cat.#:** S222178

**Product Name:** Anti-HIC1 Rabbit Polyclonal Antibody

**Synonyms:** hic-1; ZBTB29; ZNF901

**UNIPROT ID:** Q14526 (Gene Accession - NP\_001091672 )

**Background:** This gene functions as a growth regulatory and tumor repressor gene. Hypermethylation or deletion of the region of this gene have been associated with tumors and the contiguous-gene syndrome, Miller-Dieker syndrome. Alternative splicing of this gene results in multiple transcript variants.

**Immunogen:** Synthetic peptide of human HIC1

**Applications:** ELISA, IHC

**Recommended Dilutions:** IHC: 50-100; ELISA: 5000-10000

**Host Species:** Rabbit

**Clonality:** Rabbit Polyclonal

**Isotype:** Immunogen-specific rabbit IgG

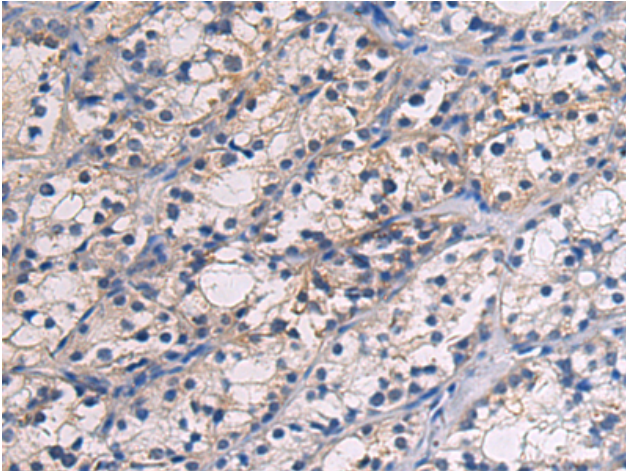
**Purification:** Antigen affinity purification

**Species Reactivity:** Human, Mouse

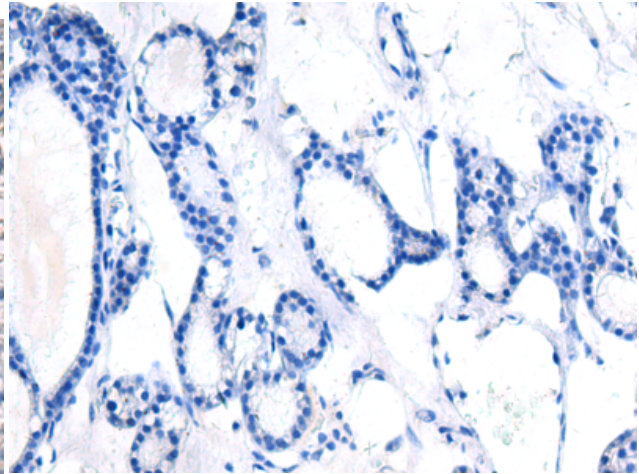
**Constituents:** PBS (without Mg<sup>2+</sup> and Ca<sup>2+</sup>), pH 7.4, 150 mM NaCl, 0.05% Sodium Azide and 40% glycerol

**Research Areas:** Epigenetics and Nuclear Signaling

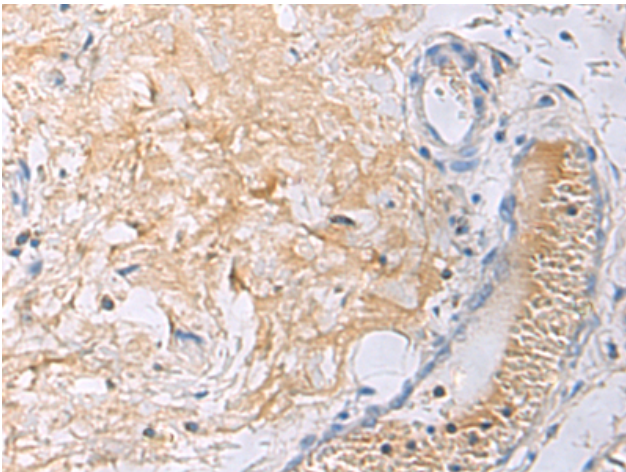
**Storage & Shipping:** Store at -20°C. Avoid repeated freezing and thawing



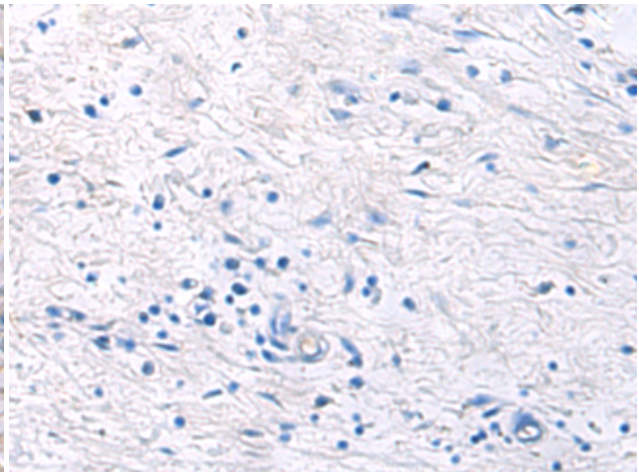
Immunohistochemistry analysis of paraffin embedded Human thyroid cancer using 222178 (HIC1 Antibody) at a dilution of 1/55 (Cytoplasm).



In comparison with the IHC on the left, the same paraffin-embedded Human thyroid cancer is first treated with the synthetic peptide and then with 222178 (Anti-HIC1 Antibody) at dilution 1/55.



The image on the left is immunohistochemistry of paraffin-embedded Human gastric cancer using 222178 (Anti-HIC1 Antibody) at a dilution of 1/55.



In comparison with the IHC on the left, the same paraffin-embedded Human gastric cancer is first treated with synthetic peptide and then with D264177 (Anti-HIC1 Antibody) at dilution 1/55.