

## HECTD2 RABBIT PAB

**Cat.#:** S222173

**Product Name:** Anti-HECTD2 Rabbit Polyclonal Antibody

**Synonyms:**

**UNIPROT ID:** Q5U5R9 (Gene Accession - NP\_877497 )

**Background:** Probable E3 ubiquitin-protein ligase which accepts ubiquitin from an E2 ubiquitin-conjugating enzyme in the form of a thioester and then directly transfers the ubiquitin to targeted substrates.

**Immunogen:** Synthetic peptide of human HECTD2

**Applications:** ELISA, IHC

**Recommended Dilutions:** IHC: 50-100; ELISA: 5000-10000

**Host Species:** Rabbit

**Clonality:** Rabbit Polyclonal

**Isotype:** Immunogen-specific rabbit IgG

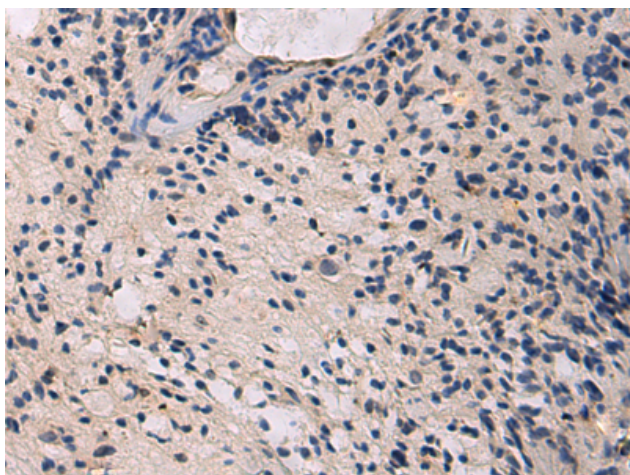
**Purification:** Antigen affinity purification

**Species Reactivity:** Human, Mouse

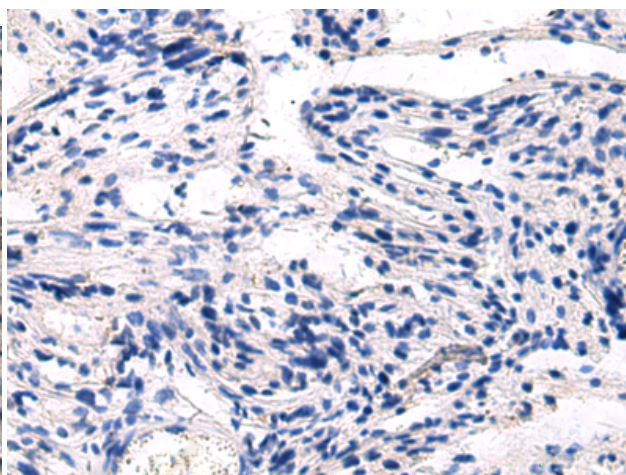
**Constituents:** PBS (without Mg<sup>2+</sup> and Ca<sup>2+</sup>), pH 7.4, 150 mM NaCl, 0.05% Sodium Azide and 40% glycerol

**Research Areas:** Cell Biology

**Storage & Shipping:** Store at -20°C. Avoid repeated freezing and thawing



Immunohistochemistry analysis of paraffin embedded Human brain using 222173(HECTD2 Antibody) at a dilution of 1/50(Cytoplasm).



In comparison with the IHC on the left, the same paraffin-embedded Human brain is first treated with the synthetic peptide and then with 222173(Anti-HECTD2 Antibody) at dilution 1/50.