

## HEBP2 RABBIT PAB

**Cat.#:** S219012

**Product Name:** Anti-HEBP2 Rabbit Polyclonal Antibody

**Synonyms:** PP23; SOUL; C6orf34; C6ORF34B

**UNIPROT ID:** Q9Y5Z4 (Gene Accession - BC008205 )

**Background:** The protein encoded by this gene is found predominately in the cytoplasm, where it plays a role in the collapse of mitochondrial membrane potential (MMP) prior to necrotic cell death. The encoded protein enhances outer and inner mitochondrial membrane permeabilization, especially under conditions of oxidative stress.

**Immunogen:** Fusion protein of human HEBP2

**Applications:** ELISA, IHC

**Recommended Dilutions:** IHC: 50-300; ELISA: 5000-10000

**Host Species:** Rabbit

**Clonality:** Rabbit Polyclonal

**Isotype:** Immunogen-specific rabbit IgG

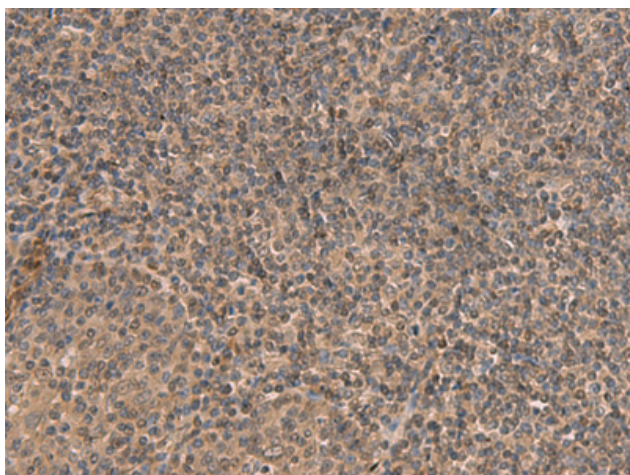
**Purification:** Antigen affinity purification

**Species Reactivity:** Human, Mouse

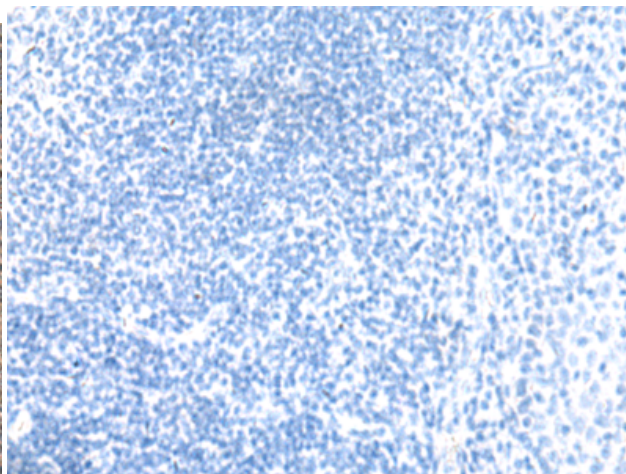
**Constituents:** PBS (without Mg<sup>2+</sup> and Ca<sup>2+</sup>), pH 7.4, 150 mM NaCl, 0.05% Sodium Azide and 40% glycerol

**Research Areas:** Cell Biology

**Storage & Shipping:** Store at -20°C. Avoid repeated freezing and thawing



Immunohistochemistry analysis of paraffin embedded Human tonsil tissue using 219012(HEBP2 Antibody) at a dilution of 1/70(Cytoplasm and Nucleus).



In comparison with the IHC on the left, the same paraffin-embedded Human tonsil tissue is first treated with the fusion protein and then with 219012(Anti-HEBP2 Antibody) at dilution 1/70.