

HCRTR1 RABBIT PAB

Cat.#: S220159

Product Name: Anti-HCRTR1 Rabbit Polyclonal Antibody

Synonyms: OX1R

UNIPROT ID: O43613 (Gene Accession - NP_001516)

Background: The protein encoded by this gene is a G-protein coupled receptor involved in the regulation of feeding behavior. The encoded protein selectively binds the hypothalamic neuropeptide orexin A. A related gene (HCRTR2) encodes a G-protein coupled receptor that binds orexin A and orexin B.

Immunogen: Synthetic peptide of human HCRTR1

Applications: ELISA, IHC

Recommended Dilutions: IHC: 100-300; ELISA: 2000-10000

Host Species: Rabbit

Clonality: Rabbit Polyclonal

Isotype: Immunogen-specific rabbit IgG

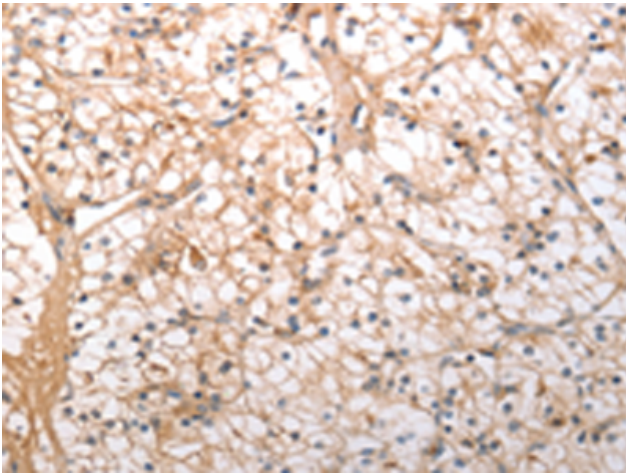
Purification: Antigen affinity purification

Species Reactivity: Human, Mouse, Rat

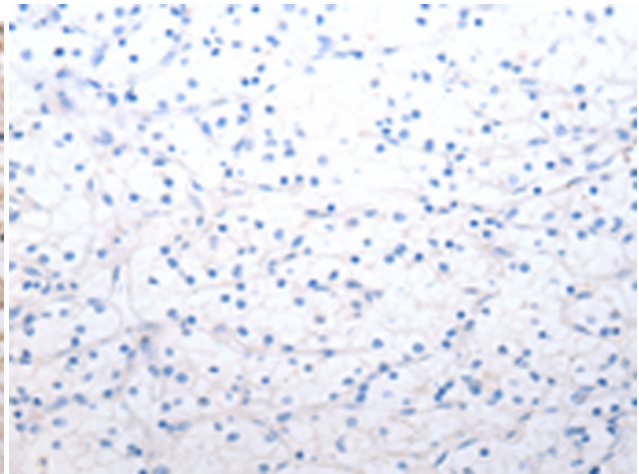
Constituents: PBS (without Mg²⁺ and Ca²⁺), pH 7.4, 150 mM NaCl, 0.05% Sodium Azide and 40% glycerol

Research Areas: Signal Transduction, Metabolism, Neuroscience

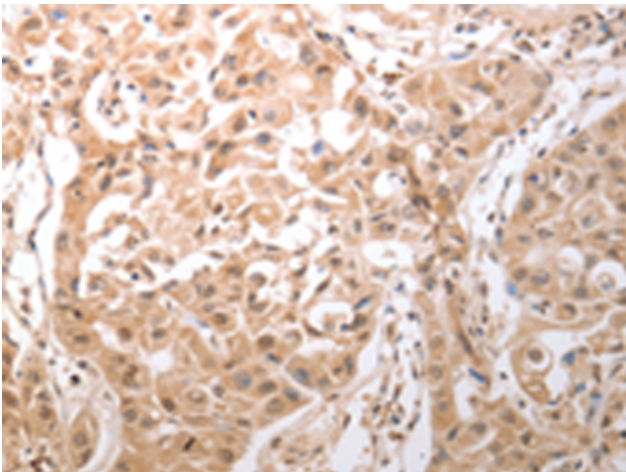
Storage & Shipping: Store at -20°C. Avoid repeated freezing and thawing



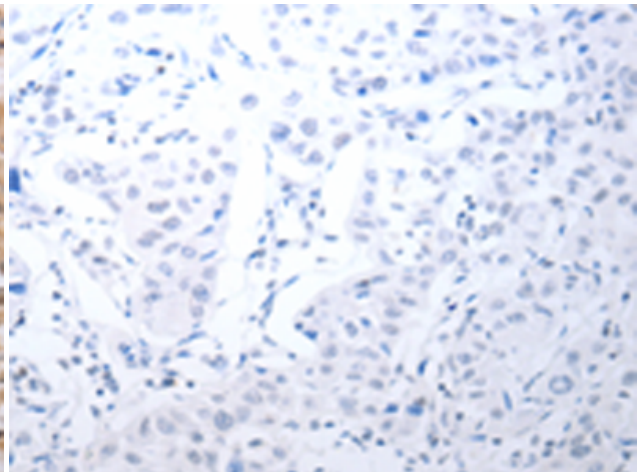
Immunohistochemistry analysis of paraffin embedded Human renal cancer tissue using 220159(HCRTR1 Antibody) at a dilution of 1/100(Cytoplasm).



In comparison with the IHC on the left, the same paraffin-embedded Human renal cancer tissue is first treated with the synthetic peptide and then with 220159(Anti-HCRTR1 Antibody) at dilution 1/100.



The image on the left is immunohistochemistry of paraffin-embedded Human lung cancer tissue using 220159(Anti-HCRTR1 Antibody) at a dilution of 1/100.



In comparison with the IHC on the left, the same paraffin-embedded Human lung cancer tissue is first treated with synthetic peptide and then with D261060(Anti-HCRTR1 Antibody) at dilution 1/100.