

## HASPIN RABBIT PAB

**Cat.#:** S222159

**Product Name:** Anti-HASPIN Rabbit Polyclonal Antibody

**Synonyms:** GSG2

**UNIPROT ID:** Q8TF76 (Gene Accession - NP\_114171 )

**Background:** Serine/threonine-protein kinase that phosphorylates histone H3 at 'Thr-3' (H3T3ph) during mitosis. This positions and activates AURKB and other components of the chromosomal passenger complex (CPC) at centromeres to ensure proper chromatid cohesion, metaphase alignment and normal progression through the cell cycle.

**Immunogen:** Synthetic peptide of human HASPIN

**Applications:** ELISA, IHC

**Recommended Dilutions:** IHC: 20-100; ELISA: 5000-10000

**Host Species:** Rabbit

**Clonality:** Rabbit Polyclonal

**Isotype:** Immunogen-specific rabbit IgG

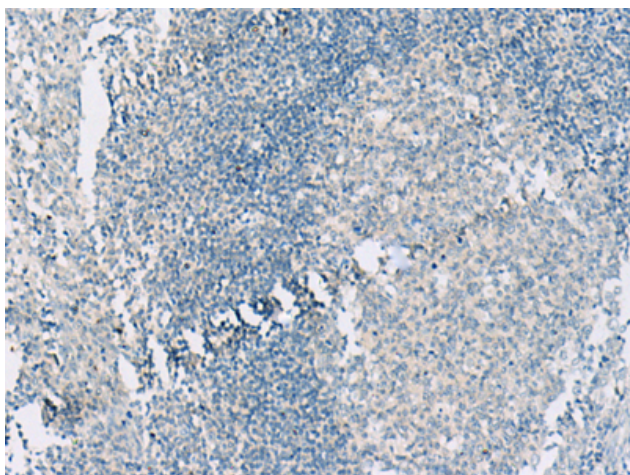
**Purification:** Antigen affinity purification

**Species Reactivity:** Human

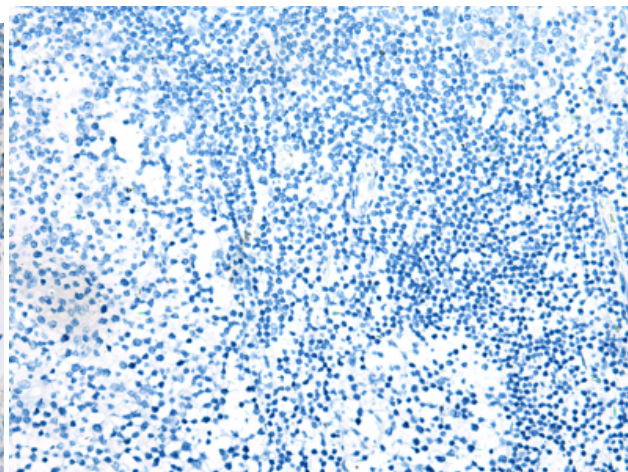
**Constituents:** PBS (without Mg<sup>2+</sup> and Ca<sup>2+</sup>), pH 7.4, 150 mM NaCl, 0.05% Sodium Azide and 40% glycerol

**Research Areas:** Epigenetics and Nuclear Signaling

**Storage & Shipping:** Store at -20°C. Avoid repeated freezing and thawing



Immunohistochemistry analysis of paraffin embedded Human tonsil tissue using 222159(HASPIN Antibody) at a dilution of 1/55(Cytoplasm).



In comparison with the IHC on the left, the same paraffin-embedded Human tonsil tissue is first treated with the synthetic peptide and then with 222159(Anti-HASPIN Antibody) at dilution 1/55.