

## HADHA RABBIT MAB

**Cat.#:** N262311

**Product Name:** Anti-HADHA Rabbit Monoclonal Antibody

**Synonyms:** GBP; ECHA; HADH; LCEH; MTPA; LCHAD; TP-ALPHA

**UNIPROT ID:** P40939

**Background:** Mitochondrial trifunctional enzyme catalyzes the last three of the four reactions of the mitochondrial beta-oxidation pathway.

**Immunogen:** A synthetic peptide of human HADHA

**Applications:** WB,IHC-F,IHC-P,ICC/IF,IP

**Recommended Dilutions:** WB: 1/500-1/1000 IHC: 1/50-1/100 IF: 1/50-1/200 IP: 1/20

**Host Species:** Rabbit

**Clonality:** Rabbit Monoclonal

**Clone ID:** R07-6H4

**MW:** Calculated MW: 83 kDa; Observed MW: 78 kDa

**Isotype:** IgG

**Purification:** Affinity Purified

**Species Reactivity:** Human,Mouse,Rat

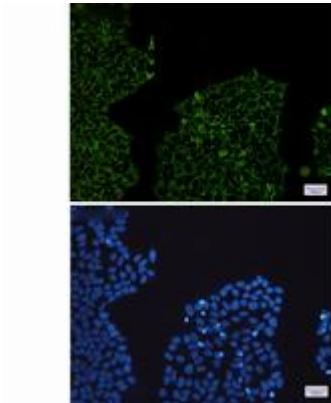
**Conjugation:** Unconjugated

**Modification:** Unmodified

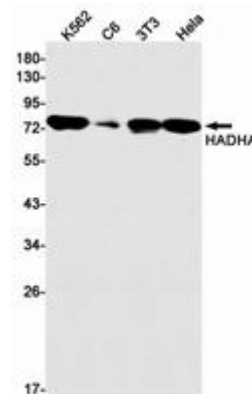
**Constituents:** PBS (without Mg<sup>2+</sup> and Ca<sup>2+</sup>), pH 7.3 containing 50% glycerol, 0.5% BSA and 0.02% sodium azide

**Research Areas:** Tags & Cell Markers

**Storage & Shipping:** Store at -20°C. Avoid repeated freezing and thawing



Immunocytochemistry analysis of HADHA (green) in Hela using HADHA antibody, and DAPI (blue)



Western blot analysis of HADHA in K562, C6, 3T3, Hela lysates using HADHA antibody.



Immunohistochemistry analysis of paraffin-embedded Human colon cancer using HADHA antibody. High-pressure and temperature Sodium Citrate pH 6.0 was used for antigen retrieval.