

## HADHA RABBIT MAB

**Cat.#:** N262312

**Product Name:** Anti-HADHA Rabbit Monoclonal Antibody

**Synonyms:** GBP; ECHA; HADH; LCEH; MTPA; LCHAD; TP-ALPHA

**UNIPROT ID:** P40939

**Background:** Mitochondrial trifunctional enzyme catalyzes the last three of the four reactions of the mitochondrial beta-oxidation pathway.

**Immunogen:** A synthetic peptide of human HADHA

**Applications:** WB, ICC/IF, IP

**Recommended Dilutions:** WB: 1/500-1/1000 IF: 1/50-1/200 IP: 1/20

**Host Species:** Rabbit

**Clonality:** Rabbit Monoclonal

**Clone ID:** R08-9D9

**MW:** Calculated MW: 83 kDa; Observed MW: 78 kDa

**Isotype:** IgG

**Purification:** Affinity Purified

**Species Reactivity:** Human

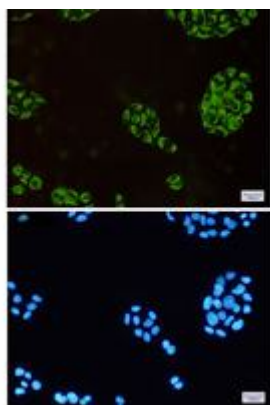
**Conjugation:** Unconjugated

**Modification:** Unmodified

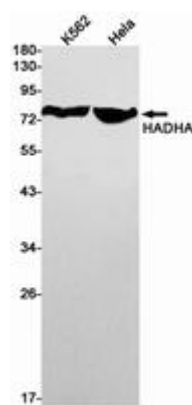
**Constituents:** PBS (without Mg<sup>2+</sup> and Ca<sup>2+</sup>), pH 7.3 containing 50% glycerol, 0.5% BSA and 0.02% sodium azide

**Research Areas:** Tags & Cell Markers

**Storage & Shipping:** Store at -20°C. Avoid repeated freezing and thawing



Immunocytochemistry analysis of HADHA (green) in Hela using HADHA antibody, and DAPI (blue)



Western blot analysis of HADHA in K562, Hela lysates using HADHA antibody.



# Product Description

Pioneering GTPase and Oncogene Product Development since 2010

---