

GZMM RABBIT PAB

Cat.#: S221350

Product Name: Anti-GZMM Rabbit Polyclonal Antibody

Synonyms: MET1; LMET1

UNIPROT ID: P51124 (Gene Accession - NP_005308)

Background: Human natural killer (NK) cells and activated lymphocytes express and store a distinct subset of neutral serine proteases together with proteoglycans and other immune effector molecules in large cytoplasmic granules. These serine proteases are collectively termed granzymes and include 4 distinct gene products: granzyme A, granzyme B, granzyme H, and the protein encoded by this gene, granzyme M. Two transcript variants encoding different isoforms have been found for this gene.

Immunogen: Synthetic peptide of human GZMM

Applications: ELISA, IHC

Recommended Dilutions: IHC: 20-100; ELISA: 5000-10000

Host Species: Rabbit

Clonality: Rabbit Polyclonal

Isotype: Immunogen-specific rabbit IgG

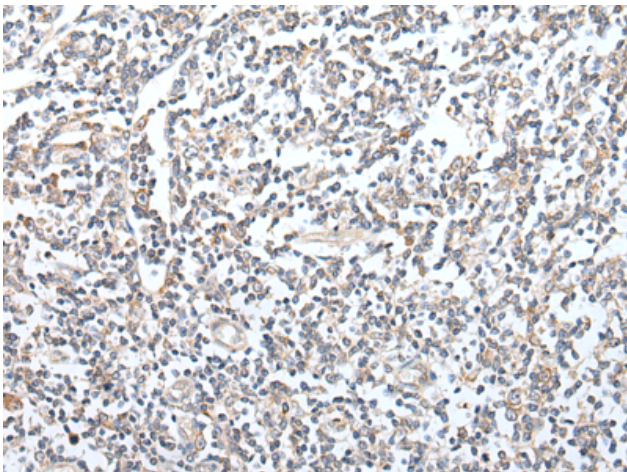
Purification: Antigen affinity purification

Species Reactivity: Human, Rat

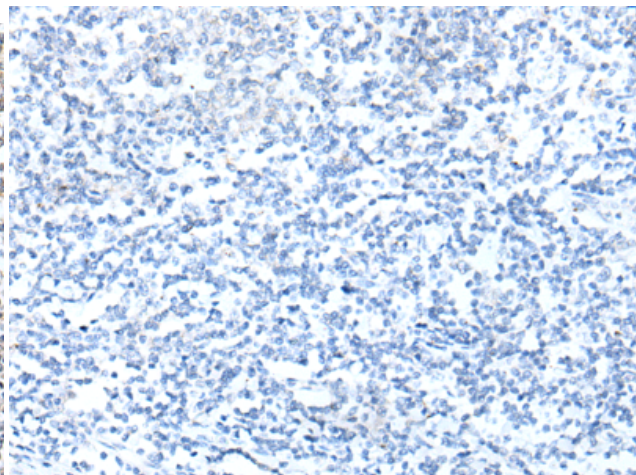
Constituents: PBS (without Mg²⁺ and Ca²⁺), pH 7.4, 150 mM NaCl, 0.05% Sodium Azide and 40% glycerol

Research Areas: Cancer, Cell Biology

Storage & Shipping: Store at -20°C. Avoid repeated freezing and thawing



Immunohistochemistry analysis of paraffin embedded Human tonsil tissue using 221350(GZMM Antibody) at a dilution of 1/30(Cytoplasm).



In comparison with the IHC on the left, the same paraffin-embedded Human tonsil tissue is first treated with the synthetic peptide and then with 221350(Anti-GZMM Antibody) at dilution 1/30.