

## GUCY1B2 RABBIT PAB

**Cat.#:** S222155

**Product Name:** Anti-GUCY1B2 Rabbit Polyclonal Antibody

**Synonyms:** GC-SB2

**UNIPROT ID:** O75343 (Gene Accession - Hs.411573 )

**Background:** Guanylate Cyclase is a heterodimer of an alpha and a beta chain. Its enzymatic activity transforms GTP to GMP releasing a diphosphate. It binds 1 or 2 hemes per heterodimer. It is activated by nitric oxide in the presence of magnesium or manganese ions. There are two types of guanylate cyclase: soluble form and membrane-associated receptor form.

**Immunogen:** Synthetic peptide of human GUCY1B2

**Applications:** ELISA, IHC

**Recommended Dilutions:** IHC: 20-100; ELISA: 5000-10000

**Host Species:** Rabbit

**Clonality:** Rabbit Polyclonal

**Isotype:** Immunogen-specific rabbit IgG

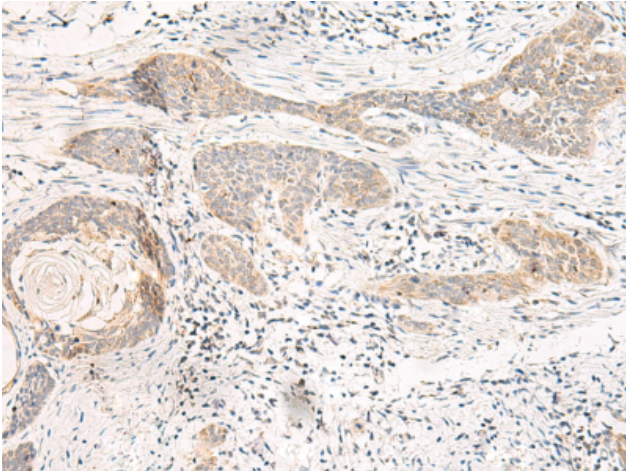
**Purification:** Antigen affinity purification

**Species Reactivity:** Human

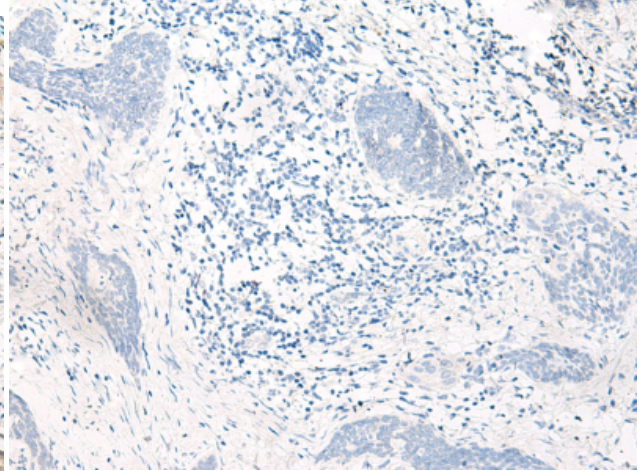
**Constituents:** PBS (without Mg<sup>2+</sup> and Ca<sup>2+</sup>), pH 7.4, 150 mM NaCl, 0.05% Sodium Azide and 40% glycerol

**Research Areas:** Signal Transduction

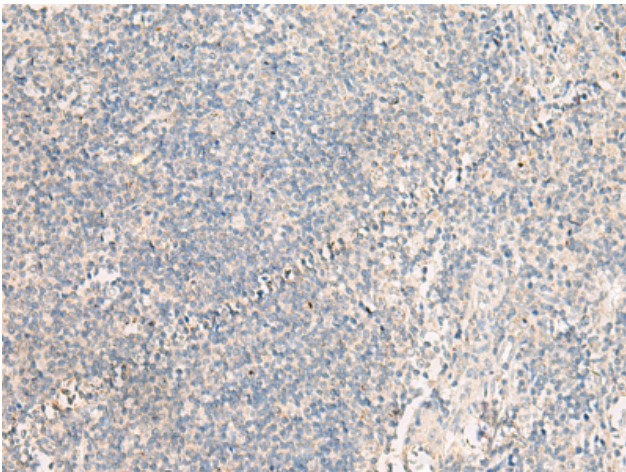
**Storage & Shipping:** Store at -20°C. Avoid repeated freezing and thawing



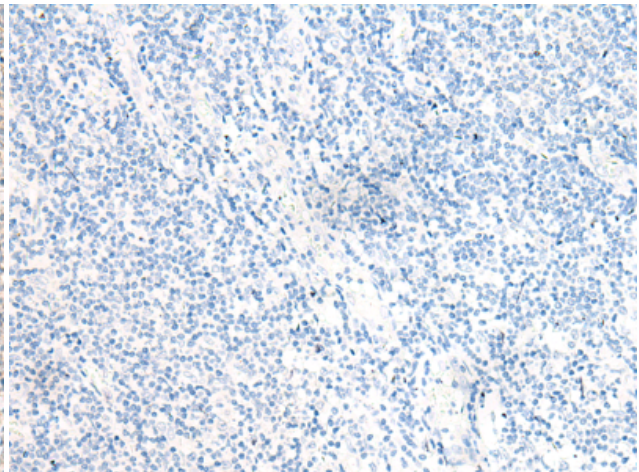
Immunohistochemistry analysis of paraffin embedded Human esophagus cancer tissue using 222155(GUCY1B2 Antibody) at a dilution of 1/20(Cytoplasm).



In comparison with the IHC on the left, the same paraffin-embedded Human esophagus cancer tissue is first treated with the synthetic peptide and then with 222155(Anti-GUCY1B2 Antibody) at dilution 1/20.



The image on the left is immunohistochemistry of paraffin-embedded Human tonsil tissue using 222155(Anti-GUCY1B2 Antibody) at a dilution of 1/20.



In comparison with the IHC on the left, the same paraffin-embedded Human tonsil tissue is first treated with synthetic peptide and then with D264142(Anti-GUCY1B2 Antibody) at dilution 1/20.