

## GUCA1B RABBIT PAB

**Cat.#:** S222070

**Product Name:** Anti-GUCA1B Rabbit Polyclonal Antibody

**Synonyms:** RP48; GCAP2; GUCA2

**UNIPROT ID:** Q9UMX6 (Gene Accession - NP\_002089 )

**Background:** The protein encoded by this gene is a calcium-binding protein that activates photoreceptor guanylate cyclases. This gene may have arisen due to a gene duplication event since there is a highly similar gene clustered with it on chromosome 6. Mutations in this gene can cause a form of retinitis pigmentosa.

**Immunogen:** Synthetic peptide of human GUCA1B

**Applications:** ELISA, WB, IHC

**Recommended Dilutions:** IHC: 40-200;WB: 500-2000;ELISA: 5000-10000

**Host Species:** Rabbit

**Clonality:** Rabbit Polyclonal

**Isotype:** Immunogen-specific rabbit IgG

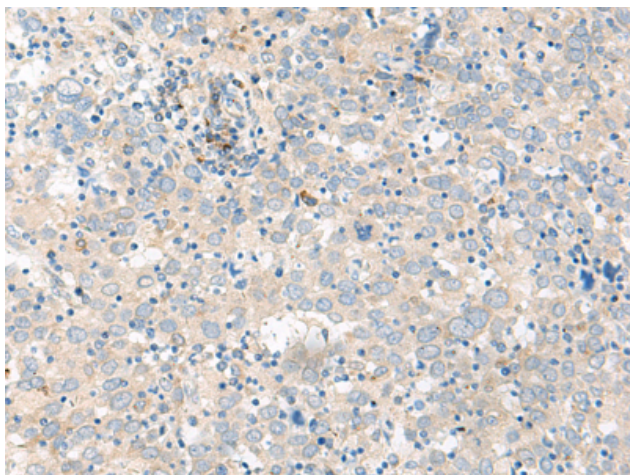
**Purification:** Antigen affinity purification

**Species Reactivity:** Human, Mouse

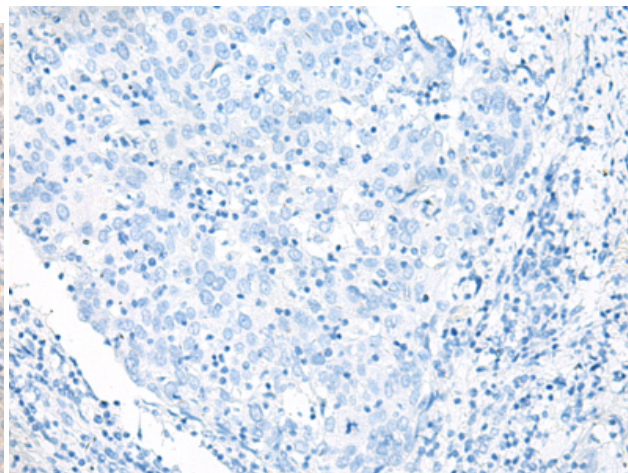
**Constituents:** PBS (without Mg<sup>2+</sup> and Ca<sup>2+</sup>), pH 7.4, 150 mM NaCl, 0.05% Sodium Azide and 40% glycerol

**Research Areas:** Signal Transduction, Neuroscience

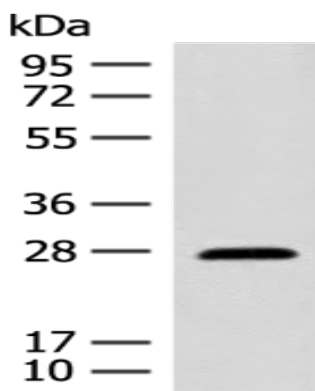
**Storage & Shipping:** Store at -20°C. Avoid repeated freezing and thawing



Immunohistochemistry analysis of paraffin embedded Human cervical cancer tissue using 222070(GUCA1B Antibody) at a dilution of 1/45(Cell membrane).



In comparison with the IHC on the left, the same paraffin-embedded Human cervical cancer tissue is first treated with the synthetic peptide and then with 222070(Anti-GUCA1B Antibody) at dilution 1/45.



Gel: 12%SDS-PAGE, Lysate: 40  $\mu$ g;  
Lane: Mouse eye tissue lysate;  
Primary antibody: 222070(GUCA1B Antibody) at dilution 1/500;  
Secondary antibody: Goat anti rabbit IgG at 1/8000 dilution;  
Exposure time: 10 seconds