

## GTPASE HRAS RABBIT PAB

**Cat.#:** N225374

**Product Name:** Anti-GTPase HRAS Rabbit pAb

**Synonyms:** NS6; CMNS; NCMS; ALPS4; N-ras; NRAS1

**UNIPROT ID:** P01111

**Background:** Ras proteins bind GDP/GTP and possess intrinsic GTPase activity. Miscellaneous Mutations which change AA 12, 13 or 61 activate the potential of Ras to transform cultured cells and are implicated in a variety of human tumors.

**Immunogen:** The antiserum was produced against synthesized peptide derived from human RASH/RASK. AA range:1-50

**Applications:** WB,IHC-P,ELISA

**Recommended Dilutions:** WB: 1/500-1/1000 IHC: 1/50-1/100 ELISA: 1/10000

**Host Species:** Rabbit

**Clonality:** Rabbit Polyclonal

**Clone ID:** -

**MW:** Calculated MW: 21 kDa; Observed MW: 21 kDa

**Isotype:** IgG

**Purification:** Affinity Purified

**Species Reactivity:** Human,Mouse,Rat

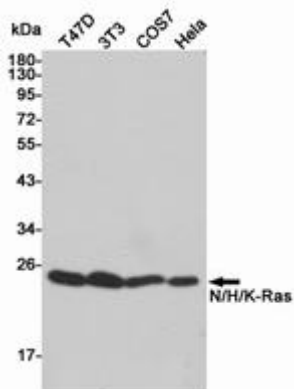
**Conjugation:** Unconjugated

**Modification:** Unmodified

**Constituents:** PBS (without Mg<sup>2+</sup> and Ca<sup>2+</sup>), pH 7.3 containing 50% glycerol, 0.5% BSA and 0.02% sodium azide

**Research Areas:** Signal Transduction

**Storage & Shipping:** Store at -20°C. Avoid repeated freezing and thawing



Western blot analysis of N/H/K-Ras in T47D, 3T3, COS7 and HeLa lysates using N/H/K-Ras antibody.