

GTPASE HRAS RABBIT MAB

Cat.#: N262817

Product Name: Anti-GTPase HRAS Rabbit Monoclonal Antibody

Synonyms: NS6; CMNS; NCMS; ALPS4; N-ras; NRAS1

UNIPROT ID: P01111

Background: Ras proteins bind GDP/GTP and possess intrinsic GTPase activity. Miscellaneous Mutations which change AA 12, 13 or 61 activate the potential of Ras to transform cultured cells and are implicated in a variety of human tumors.

Immunogen: Recombinant protein of human RAS

Applications: WB, ICC/IF, IP

Recommended Dilutions: WB: 1/500-1/1000 IF: 1/50-1/200 IP: 1/20

Host Species: Rabbit

Clonality: Rabbit Monoclonal

Clone ID: R09-7E8

MW: Calculated MW: 21 kDa; Observed MW: 21 kDa

Isotype: IgG

Purification: Affinity Purified

Species Reactivity: Human, Mouse, Rat

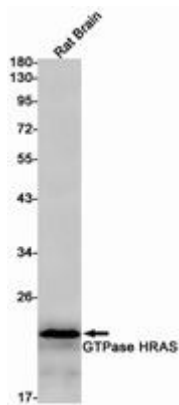
Conjugation: Unconjugated

Modification: Unmodified

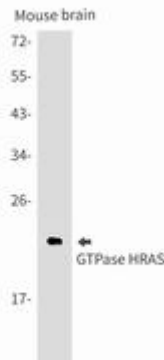
Constituents: PBS (without Mg²⁺ and Ca²⁺), pH 7.3 containing 50% glycerol, 0.5% BSA and 0.02% sodium azide

Research Areas: Signal Transduction

Storage & Shipping: Store at -20°C. Avoid repeated freezing and thawing



Western blot analysis of RAS in rat Brain lysates using RAS antibody.



Western blot analysis of GTPase HRAS in mouse brain lysates using GTPase HRAS antibody.