

GTPASE HRAS RABBIT MAB

Cat.#: N263526

Product Name: Anti-GTPase HRAS Rabbit Monoclonal Antibody

Synonyms: NS6; CMNS; NCMS; ALPS4; N-ras; NRAS1

UNIPROT ID: P01111

Background: Ras proteins bind GDP/GTP and possess intrinsic GTPase activity. Miscellaneous Mutations which change AA 12, 13 or 61 activate the potential of Ras to transform cultured cells and are implicated in a variety of human tumors.

Immunogen: A synthetic peptide of human Ras

Applications: WB, IP

Recommended Dilutions: WB: 1/500-1/1000 IP: 1/20

Host Species: Rabbit

Clonality: Rabbit Monoclonal

Clone ID: R01-7D0

MW: Calculated MW: 21 kDa; Observed MW: 21 kDa

Isotype: IgG

Purification: Affinity Purified

Species Reactivity: Human, Mouse, Rat, Hamster

Conjugation: Unconjugated

Modification: Unmodified

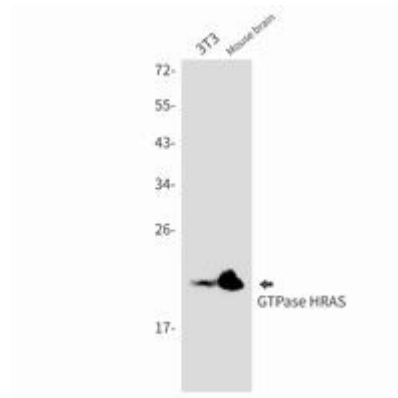
Constituents: PBS (without Mg²⁺ and Ca²⁺), pH 7.3 containing 50% glycerol, 0.5% BSA and 0.02% sodium azide

Research Areas: Signal Transduction

Storage & Shipping: Store at -20°C. Avoid repeated freezing and thawing



Western blot analysis of Ras in HeLa, CHO-K1, C6 lysates using Ras antibody.



Western blot analysis of GTPase HRAS in 3T3, mouse brain lysates using GTPase HRAS antibody.