

## GSTO1 RABBIT PAB

**Cat.#:** S217494

**Product Name:** Anti-GSTO1 Rabbit Polyclonal Antibody

**Synonyms:** P28; SPG-R; GSTO 1-1; GSTTLp28; HEL-S-21

**UNIPROT ID:** P78417 (Gene Accession - BC000127 )

**Background:** The protein encoded by this gene is an omega class glutathione S-transferase (GST) with glutathione-dependent thiol transferase and dehydroascorbate reductase activities. GSTs are involved in the metabolism of xenobiotics and carcinogens. The encoded protein acts as a homodimer and is found in the cytoplasm. Three transcript variants encoding different isoforms have been found for this gene.

**Immunogen:** Fusion protein of human GSTO1

**Applications:** ELISA, WB, IHC

**Recommended Dilutions:** IHC: 100-300;WB: 200-1000;ELISA: 1000-2000

**Host Species:** Rabbit

**Clonality:** Rabbit Polyclonal

**Isotype:** Immunogen-specific rabbit IgG

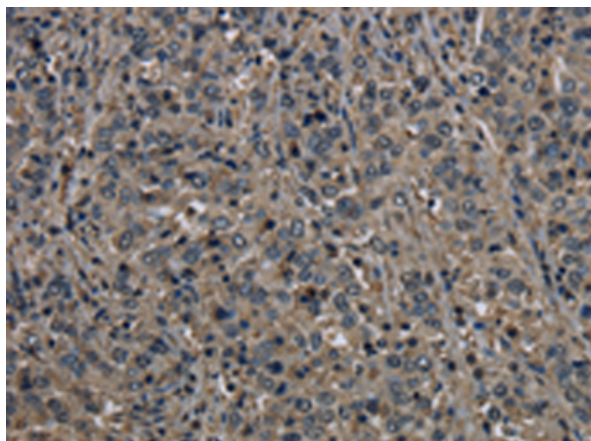
**Purification:** Antigen affinity purification

**Species Reactivity:** Human

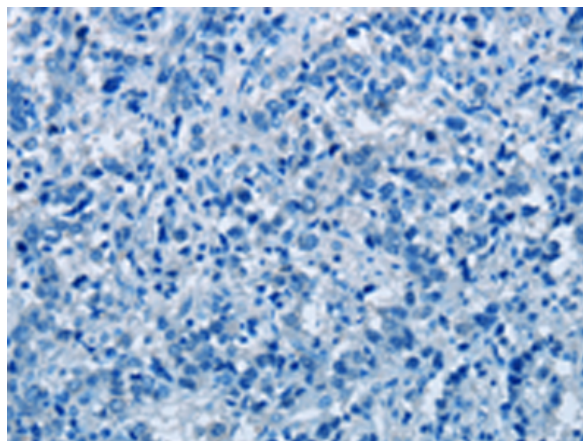
**Constituents:** PBS (without Mg<sup>2+</sup> and Ca<sup>2+</sup>), pH 7.4, 150 mM NaCl, 0.05% Sodium Azide and 40% glycerol

**Research Areas:** Metabolism

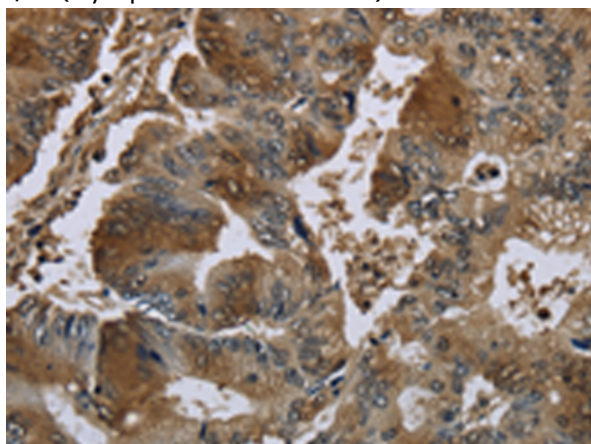
**Storage & Shipping:** Store at -20°C. Avoid repeated freezing and thawing



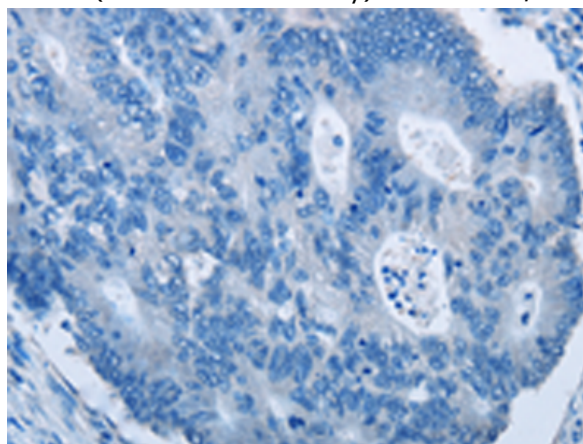
Immunohistochemistry analysis of paraffin embedded Human liver cancer tissue using 217494(GSTO1 Antibody) at a dilution of 1/60(Cytoplasm and Nucleus).



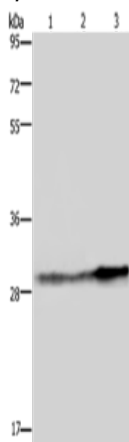
In comparison with the IHC on the left, the same paraffin-embedded Human liver cancer tissue is first treated with the fusion protein and then with 217494(Anti-GSTO1 Antibody) at dilution 1/60.



The image on the left is immunohistochemistry of paraffin-embedded Human colon cancer tissue using 217494(Anti-GSTO1 Antibody) at a dilution of 1/60.



In comparison with the IHC on the left, the same paraffin-embedded Human colon cancer tissue is first treated with fusion protein and then with D222451(Anti-GSTO1 Antibody) at dilution 1/60.



Gel: 8%SDS-PAGE, Lysate: 40 µg;  
Lane 1-3: Human hepatocellular carcinoma tissue, Hela cells, human fetal liver tissue;  
Primary antibody: 217494(GSTO1 Antibody) at dilution 1/350;  
Secondary antibody: Goat anti rabbit IgG at 1/8000 dilution;  
Exposure time: 10 seconds



# Product Description

Pioneering GTPase and Oncogene Product Development since 2010

---