

## GST3 RABBIT MAB

**Cat.#:** N262308

**Product Name:** Anti-GST3 Rabbit Monoclonal Antibody

**Synonyms:** GSTP1; FAES3; GST3; Glutathione S-transferase P; GST class-pi; GSTP1-1

**UNIPROT ID:** P09211

**Background:** Conjugation of reduced glutathione to a wide number of exogenous and endogenous hydrophobic electrophiles.

**Immunogen:** A synthetic peptide of human GST3/GST pi

**Applications:** WB,IHC-F,IHC-P,ICC/IF

**Recommended Dilutions:** WB: 1/500-1/1000 IHC: 1/50-1/100 IF: 1/50-1/200

**Host Species:** Rabbit

**Clonality:** Rabbit Monoclonal

**Clone ID:** R09-4G8

**MW:** Calculated MW: 23 kDa; Observed MW: 23 kDa

**Isotype:** IgG

**Purification:** Affinity Purified

**Species Reactivity:** Human,Mouse,Rat

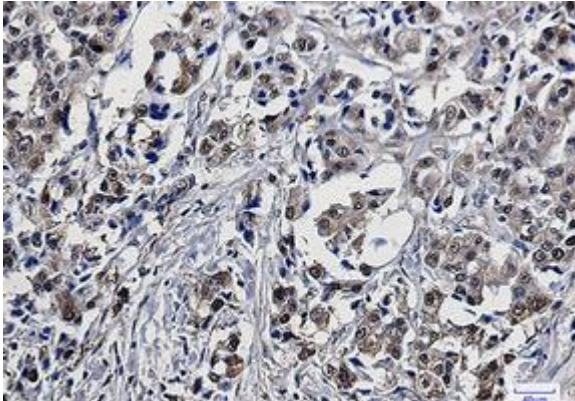
**Conjugation:** Unconjugated

**Modification:** Unmodified

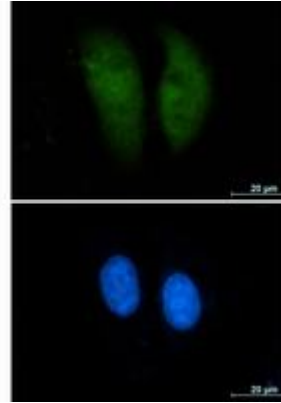
**Constituents:** PBS (without Mg<sup>2+</sup> and Ca<sup>2+</sup>), pH 7.3 containing 50% glycerol, 0.5% BSA and 0.02% sodium azide

**Research Areas:** Cardiovascular

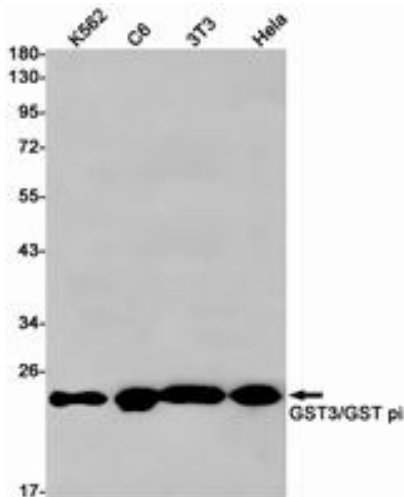
**Storage & Shipping:** Store at -20°C. Avoid repeated freezing and thawing



Immunohistochemistry analysis of paraffin-embedded Human lung cancer tissue using GST3/GST pi antibody. High-pressure and temperature Sodium Citrate pH 6.0 was used for antigen retrieval.



Immunocytochemistry analysis of GST3 (green) in A549 using GST3 antibody, and DAPI (blue).



Western blot analysis of GST3/GST pi in K562, C6, 3T3, HeLa lysates using GST3/GST pi antibody.