

## GST TAG MAB

### Anti-GST Tag Mouse Monoclonal Antibody

**Cat. #:** 28005

**Size:** 100 µL

**Symbol:** GST-tag

**Description:** Anti-GST Tag Mouse Monoclonal Antibody

**Background:** The His-tag antibody recognizes any protein containing continuous 6 or more histidine residues.

**Immunogen:** GST

**Applications:** ELISA, WB, IF, IHC

**Recommended Dilutions:**

ELISA 1:2000-1:5000

WB 1:1000-1:5000

IF 1:100-1:200

**Concentration:** 1 mg/ml

**Host Species:** Mouse

**Format:** Liquid

**Clonality:** Monoclonal

**Isotype:** IgG

**Purity:** Purified from ascites

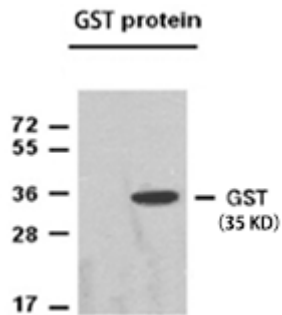
**Preservative:** No

**Constituents:** PBS (without Mg<sup>2+</sup> and Ca<sup>2+</sup>), pH 7.4, 150 mM NaCl, 50% glycerol

**Species Reactivity:** Recognizes GST protein.

**Storage Conditions:** Store at -20°C. Avoid repeated freezing and thawing

## Western blot:



Western blot: Recombinant GST tag fusion protein was diluted with GST mouse monoclonal antibody (1;1000), and the protein loading amount was 50ng, and Western blot analysis was performed.