

## GSG1L RABBIT PAB

**Cat.#:** S218988

**Product Name:** Anti-GSG1L Rabbit Polyclonal Antibody

**Synonyms:** PRO19651

**UNIPROT ID:** Q6UXU4 (Gene Accession - BC016460 )

**Background:** As a component of the inner core of AMPAR complex modifies AMPA receptor (AMPA) gating.

**Immunogen:** Fusion protein of human GSG1L

**Applications:** ELISA, IHC

**Recommended Dilutions:** IHC: 50-300; ELISA: 5000-10000

**Host Species:** Rabbit

**Clonality:** Rabbit Polyclonal

**Isotype:** Immunogen-specific rabbit IgG

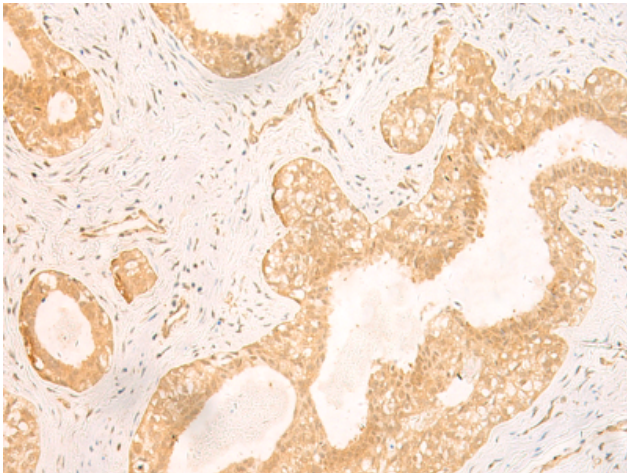
**Purification:** Antigen affinity purification

**Species Reactivity:** Human, Mouse, Rat

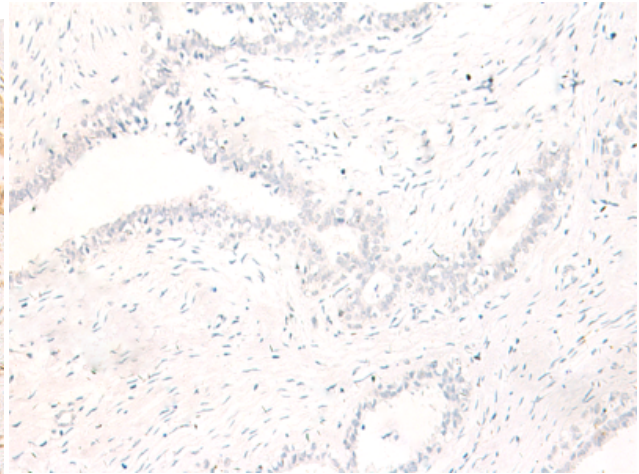
**Constituents:** PBS (without Mg<sup>2+</sup> and Ca<sup>2+</sup>), pH 7.4, 150 mM NaCl, 0.05% Sodium Azide and 40% glycerol

**Research Areas:** Cell Biology

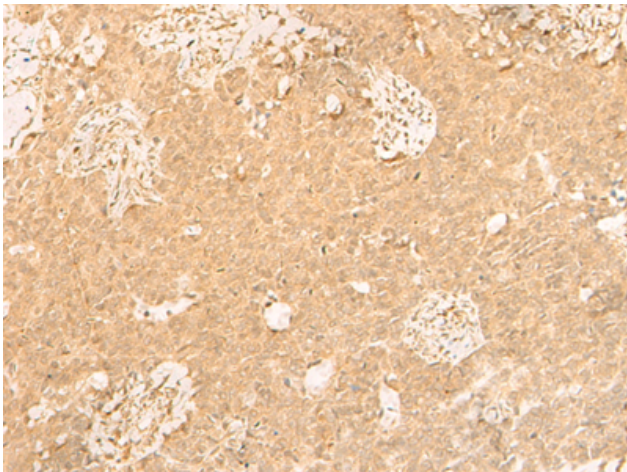
**Storage & Shipping:** Store at -20°C. Avoid repeated freezing and thawing



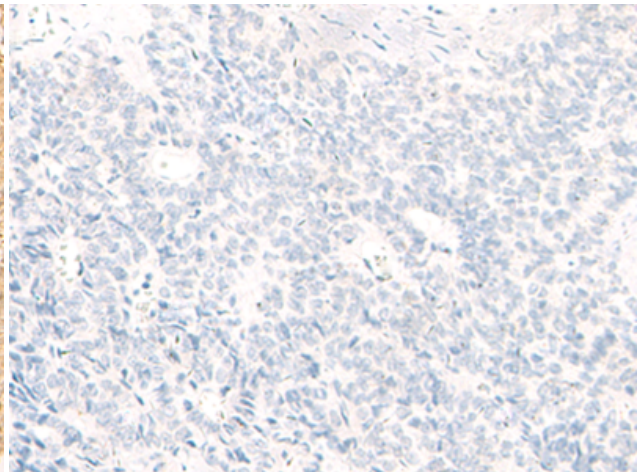
Immunohistochemistry analysis of paraffin embedded Human breast cancer tissue using 218988(GSGIL Antibody) at a dilution of 1/50(Cytoplasm and Nucleus).



In comparison with the IHC on the left, the same paraffin-embedded Human breast cancer tissue is first treated with the fusion protein and then with 218988(Anti-GSGIL Antibody) at dilution 1/50.



The image on the left is immunohistochemistry of paraffin-embedded Human ovarian cancer tissue using 218988(Anti-GSGIL Antibody) at a dilution of 1/50.



In comparison with the IHC on the left, the same paraffin-embedded Human ovarian cancer tissue is first treated with fusion protein and then with D225611(Anti-GSGIL Antibody) at dilution 1/50.