

GRTP1 RABBIT PAB

Cat.#: S215925

Product Name: Anti-GRTP1 Rabbit Polyclonal Antibody

Synonyms: TBC1D6

UNIPROT ID: Q5TC63 (Gene Accession - NP_078995)

Background: GRTP1 (Growth hormone-regulated TBC protein 1), also designated TBC1 domain family member 6, is a 336 amino acid protein with expression modulated by growth hormone. The TBC1 domain of GRTP1 is a region that is notably conserved among GTPase-activating proteins, which characteristically play a role in the cell cycle and mitosis coordination. Interestingly, expression of GRTP1 is significantly upregulated in post-puberty testis and then maintained in the adult, suggesting that the germ cell may be the major site of GRTP1 function. There are two isoforms of GRTP1, which are a result of alternative splicing events. May act as a GTPase-activating protein for Rab family protein(s).

Immunogen: Synthetic peptide of human GRTP1

Applications: ELISA, IHC

Recommended Dilutions: IHC: 25-50; ELISA: 5000-10000

Host Species: Rabbit

Clonality: Rabbit Polyclonal

Isotype: Immunogen-specific rabbit IgG

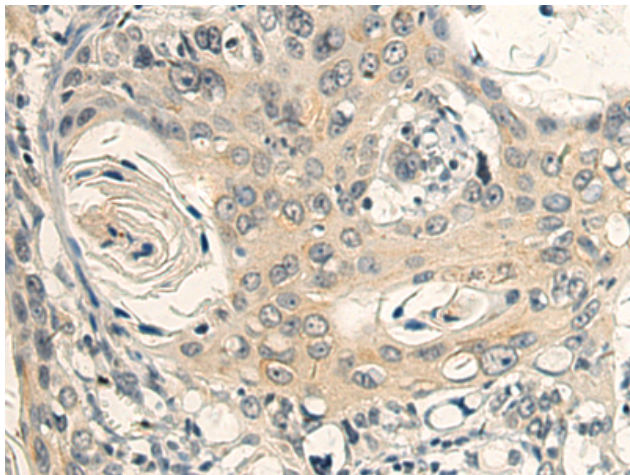
Purification: Antigen affinity purification

Species Reactivity: Human

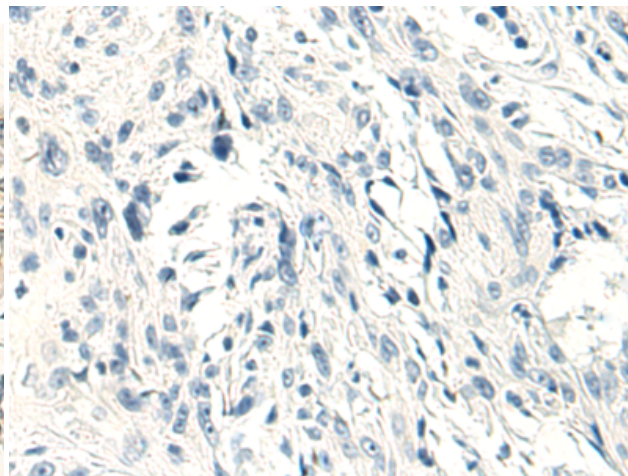
Constituents: PBS (without Mg²⁺ and Ca²⁺), pH 7.4, 150 mM NaCl, 0.05% Sodium Azide and 40% glycerol

Research Areas: Signal Transduction

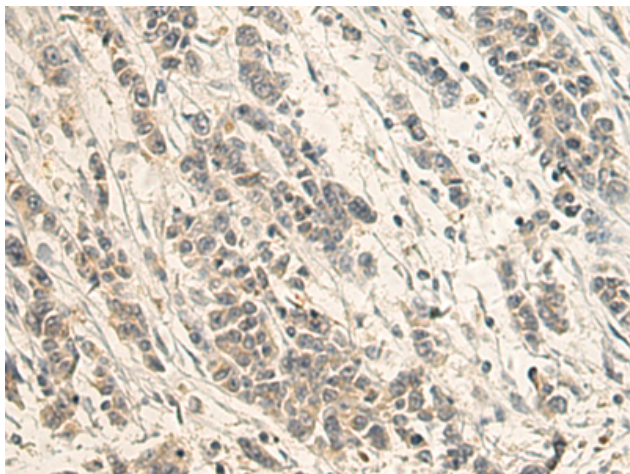
Storage & Shipping: Store at -20°C. Avoid repeated freezing and thawing



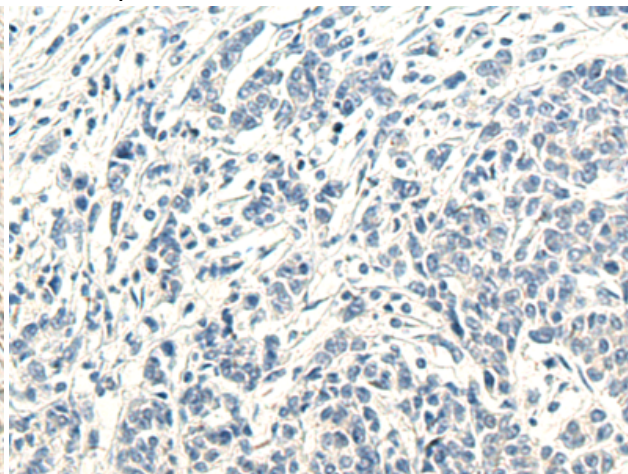
Immunohistochemistry analysis of paraffin embedded Human esophagus cancer using 215925 (GRTPI Antibody) at a dilution of 1/40 (Cytoplasm).



In comparison with the IHC on the left, the same paraffin-embedded Human esophagus cancer is first treated with the synthetic peptide and then with 215925 (Anti-GRTPI Antibody) at dilution 1/40.



The image on the left is immunohistochemistry of paraffin-embedded Human colorectal cancer using 215925 (Anti-GRTPI Antibody) at a dilution of 1/40.



In comparison with the IHC on the left, the same paraffin-embedded Human colorectal cancer is first treated with synthetic peptide and then with D164134 (Anti-GRTPI Antibody) at dilution 1/40.