

## GRSF1 RABBIT MAB

**Cat.#:** N263352

**Product Name:** Anti-GRSF1 Rabbit Monoclonal Antibody

**Synonyms:** G-rich sequence factor 1

**UNIPROT ID:** Q12849

**Background:** Regulator of post-transcriptional mitochondrial gene expression, required for assembly of the mitochondrial ribosome and for recruitment of mRNA and lncRNA.

**Immunogen:** A synthetic peptide of human GRSF1

**Applications:** WB, ICC/IF

**Recommended Dilutions:** WB: 1/500-1/1000 IF: 1/50-1/200

**Host Species:** Rabbit

**Clonality:** Rabbit Monoclonal

**Clone ID:** R06-2B5

**MW:** Calculated MW: 53 kDa; Observed MW: 53 kDa

**Isotype:** IgG

**Purification:** Affinity Purified

**Species Reactivity:** Human

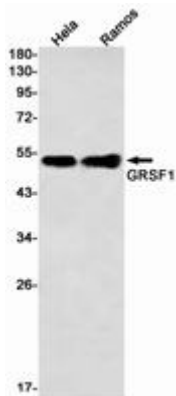
**Conjugation:** Unconjugated

**Modification:** Unmodified

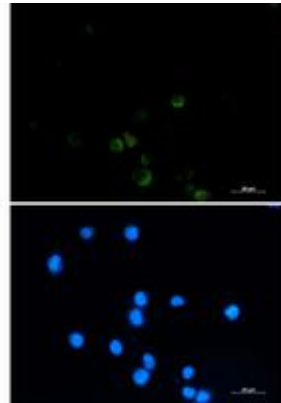
**Constituents:** PBS (without Mg<sup>2+</sup> and Ca<sup>2+</sup>), pH 7.3 containing 50% glycerol, 0.5% BSA and 0.02% sodium azide

**Research Areas:** Epigenetics and Nuclear Signaling

**Storage & Shipping:** Store at -20°C. Avoid repeated freezing and thawing



Western blot analysis of GRSF1 in HeLa, Ramos lysates using GRSF1 antibody.



Immunocytochemistry analysis of GRSF1 (green) in CEM using GRSF1 antibody, and DAPI (blue).