

## GROWTH HORMONE RECEPTOR RABBIT PAB

**Cat.#:** N225858

**Product Name:** Anti-Growth Hormone Receptor Rabbit pAb

**Synonyms:** GHR; Growth hormone receptor; GH receptor; Somatotropin receptor

**UNIPROT ID:** P10912

**Background:** Receptor for pituitary gland growth hormone involved in regulating postnatal body growth. On ligand binding, couples to the JAK2/STAT5 pathway. The soluble form (GHBP) acts as a reservoir of growth hormone in plasma and may be a modulator/inhibitor of GH signaling. Isoform 2 up-regulates the production of GHBP and acts as a negative inhibitor of GH signaling.

**Immunogen:** A synthesized peptide derived from human Growth hormone receptor

**Applications:** WB, ICC/IF, FC

**Recommended Dilutions:** WB: 1/500-1/1000 IF: 1/50-1/200 FC: 1/50-1/100

**Host Species:** Rabbit

**Clonality:** Rabbit Polyclonal

**Clone ID:** -

**MW:** Calculated MW: 72 kDa; Observed MW: 140 kDa

**Isotype:** IgG

**Purification:** Affinity Chromatography

**Species Reactivity:** Human, Mouse, Rat

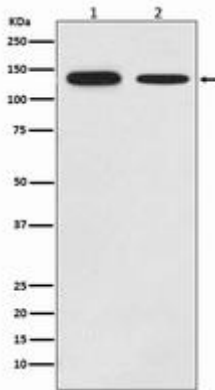
**Conjugation:** Unconjugated

**Modification:** Unmodified

**Constituents:** PBS (without Mg<sup>2+</sup> and Ca<sup>2+</sup>), pH 7.3 containing 50% glycerol, 0.5% BSA and 0.02% sodium azide

**Research Areas:** Signal Transduction

**Storage & Shipping:** Store at -20°C. Avoid repeated freezing and thawing



Western blot analysis of Growth hormone receptor in (1) MCF-7 lysates; (2) mouse brain lysates using Growth Hormone Receptor antibody.