

## GRK4 RABBIT PAB

**Cat.#:** S216543

**Product Name:** Anti-GRK4 Rabbit Polyclonal Antibody

**Synonyms:** IT11; GPRK4; GRK4α; GPRK2L

**UNIPROT ID:** P32298 (Gene Accession - BC117320 )

**Background:** This gene encodes a member of the guanine nucleotide-binding protein (G protein)-coupled receptor kinase subfamily of the Ser/Thr protein kinase family. The protein phosphorylates the activated forms of G protein-coupled receptors thus initiating its deactivation. This gene has been linked to both genetic and acquired hypertension. Several transcript variants encoding different isoforms have been found for this gene.

**Immunogen:** Fusion protein of human GRK4

**Applications:** ELISA, WB, IHC

**Recommended Dilutions:** IHC: 50-200;WB: 500-2000;ELISA: 5000-10000

**Host Species:** Rabbit

**Clonality:** Rabbit Polyclonal

**Isotype:** Immunogen-specific rabbit IgG

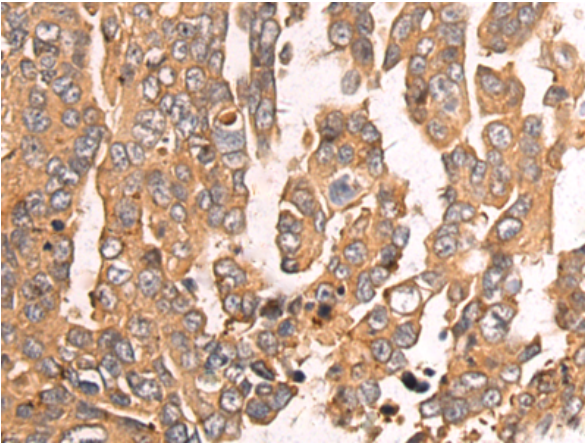
**Purification:** Antigen affinity purification

**Species Reactivity:** Human

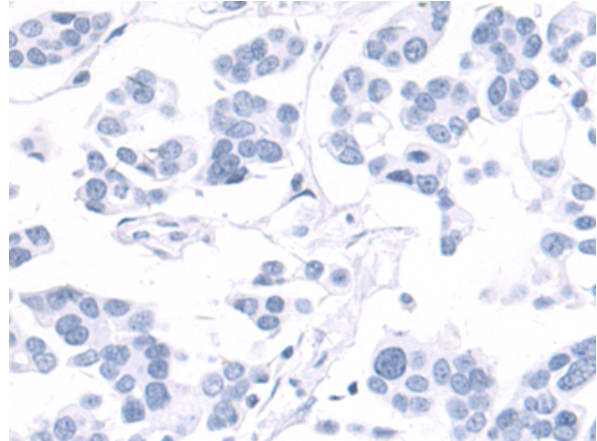
**Constituents:** PBS (without Mg<sup>2+</sup> and Ca<sup>2+</sup>), pH 7.4, 150 mM NaCl, 0.05% Sodium Azide and 40% glycerol

**Research Areas:** Signal Transduction

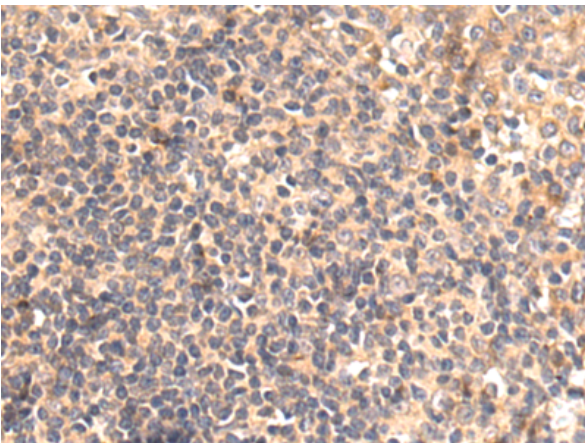
**Storage & Shipping:** Store at -20°C. Avoid repeated freezing and thawing



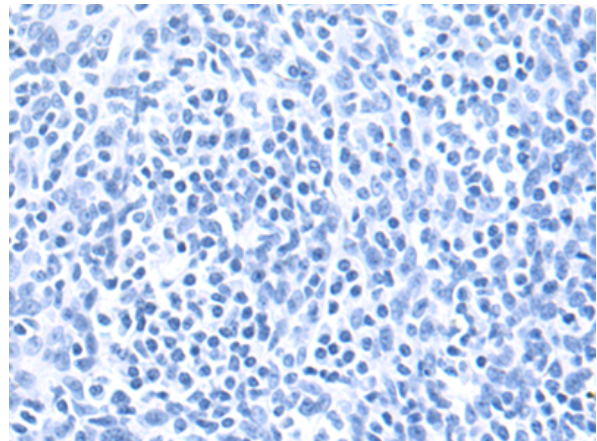
Immunohistochemistry analysis of paraffin embedded Human colorectal cancer tissue using 216543 (GRK4 Antibody) at a dilution of 1/60 (Cytoplasm).



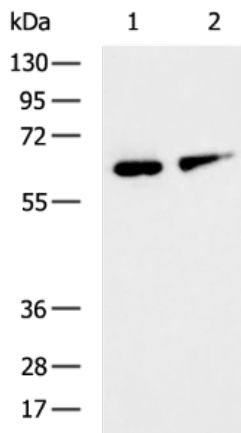
In comparison with the IHC on the left, the same paraffin-embedded Human colorectal cancer tissue is first treated with the fusion protein and then with 216543 (Anti-GRK4 Antibody) at dilution 1/60.



The image on the left is immunohistochemistry of paraffin-embedded Human tonsil tissue using 216543 (Anti-GRK4 Antibody) at a dilution of 1/60.



In comparison with the IHC on the left, the same paraffin-embedded Human tonsil tissue is first treated with fusion protein and then with D220722 (Anti-GRK4 Antibody) at dilution 1/60.



Gel: 8% SDS-PAGE, Lysate: 40 µg;  
Lane 1-2: 293T and HUVEC cell lysates;  
Primary antibody: 216543 (GRK4 Antibody) at dilution 1/600;  
Secondary antibody: HRP-conjugated Goat anti rabbit IgG at 1/5000 dilution;  
Exposure time: 15 seconds



# Product Description

Pioneering GTPase and Oncogene Product Development since 2010

---