

GRK2 RABBIT MAB

Cat.#: N263350

Product Name: Anti-GRK2 Rabbit Monoclonal Antibody

Synonyms: GRK2; BARK1; FLJ16718; BETA-ARK1; ADRBK1

UNIPROT ID: P25098

Background: GRK2 kinase activity and cellular localization are tightly regulated by interactions with activated receptors, G-beta and G-gamma subunits, adaptor proteins, phospholipids, caveolin and calmodulin, as well as by phosphorylation. PKC phosphorylation enhances GRK2 activity by promoting its membrane localization and by abolishing the inhibitory association of calmodulin.

Immunogen: A synthetic peptide of human GRK2

Applications: WB,IP

Recommended Dilutions: WB: 1/500-1/1000 IP: 1/20

Host Species: Rabbit

Clonality: Rabbit Monoclonal

Clone ID: R01-615

MW: Calculated MW: 80 kDa; Observed MW: 80 kDa

Isotype: IgG

Purification: Affinity Purified

Species Reactivity: Human

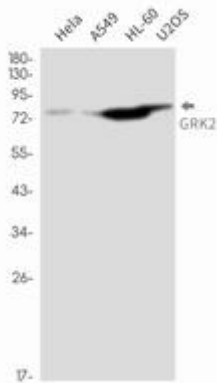
Conjugation: Unconjugated

Modification: Unmodified

Constituents: PBS (without Mg²⁺ and Ca²⁺), pH 7.3 containing 50% glycerol, 0.5% BSA and 0.02% sodium azide

Research Areas: Neuroscience

Storage & Shipping: Store at -20°C. Avoid repeated freezing and thawing



Western blot analysis of GRK2 in HeLa, A549, HL-60, U2OS lysates using GRK2 antibody.