

GRIA3 RABBIT PAB

Cat.#: S222238

Product Name: Anti-GRIA3 Rabbit Polyclonal Antibody

Synonyms: GLUR3; GLURC; GluA3; MRX94; GLUR-C; GLUR-K3

UNIPROT ID: P42263 (Gene Accession - NP_000819)

Background: Glutamate receptors are the predominant excitatory neurotransmitter receptors in the mammalian brain and are activated in a variety of normal neurophysiologic processes. These receptors are heteromeric protein complexes composed of multiple subunits, arranged to form ligand-gated ion channels. The classification of glutamate receptors is based on their activation by different pharmacologic agonists. The subunit encoded by this gene belongs to a family of AMPA (alpha-amino-3-hydroxy-5-methyl-4-isoxazole propionate)-sensitive glutamate receptors, and is subject to RNA editing (AGA->GGA; R->G). Alternative splicing at this locus results in different isoforms, which may vary in their signal transduction properties.

Immunogen: Synthetic peptide of human GRIA3

Applications: ELISA, IHC

Recommended Dilutions: IHC: 50-100; ELISA: 500-1000

Host Species: Rabbit

Clonality: Rabbit Polyclonal

Isotype: Immunogen-specific rabbit IgG

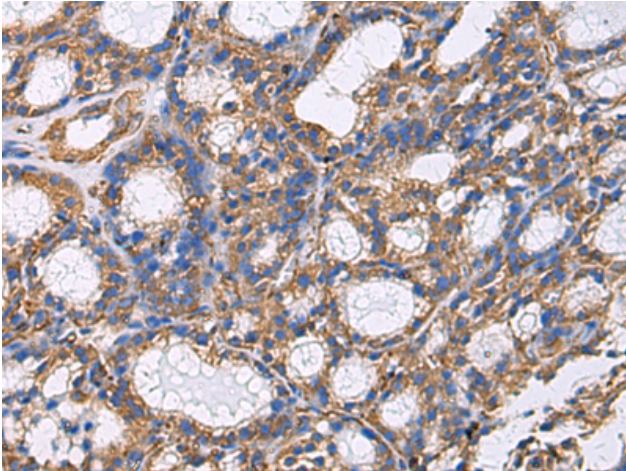
Purification: Antigen affinity purification

Species Reactivity: Human, Mouse, Rat

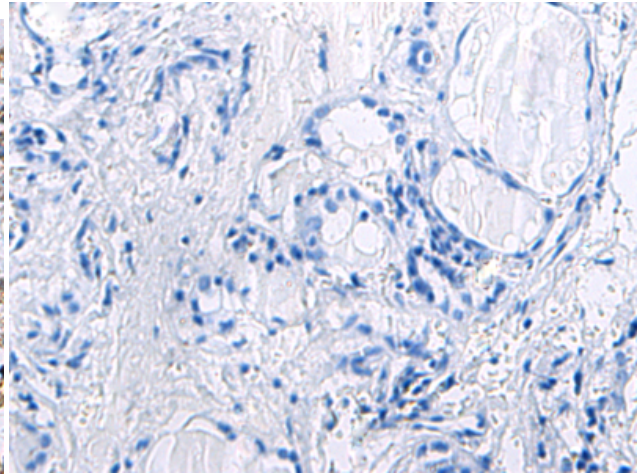
Constituents: PBS (without Mg²⁺ and Ca²⁺), pH 7.4, 150 mM NaCl, 0.05% Sodium Azide and 40% glycerol

Research Areas: Signal Transduction, Neuroscience

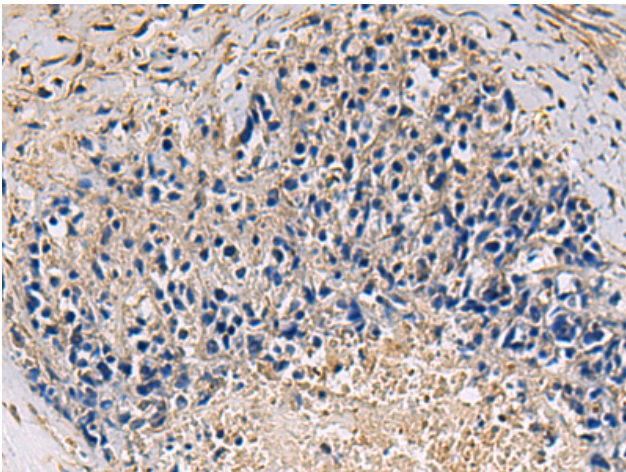
Storage & Shipping: Store at -20°C. Avoid repeated freezing and thawing



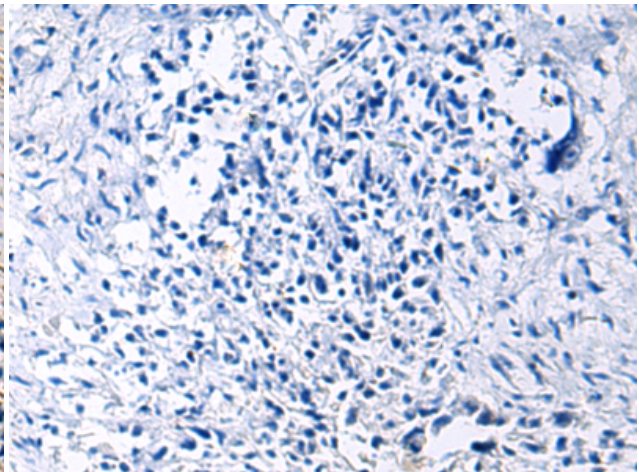
Immunohistochemistry analysis of paraffin embedded Human thyroid cancer using 222238 (GRIA3 Antibody) at a dilution of 1/20 (Cytoplasm).



In comparison with the IHC on the left, the same paraffin-embedded Human thyroid cancer is first treated with the synthetic peptide and then with 222238 (Anti-GRIA3 Antibody) at dilution 1/20.



The image on the left is immunohistochemistry of paraffin-embedded Human ovarian cancer using 222238 (Anti-GRIA3 Antibody) at a dilution of 1/20.



In comparison with the IHC on the left, the same paraffin-embedded Human ovarian cancer is first treated with synthetic peptide and then with D264265 (Anti-GRIA3 Antibody) at dilution 1/20.