

## GRHL1 RABBIT PAB

**Cat.#:** S215914

**Product Name:** Anti-GRHL1 Rabbit Polyclonal Antibody

**Synonyms:** MGR; NH32; LBP32; TFCP2L2

**UNIPROT ID:** Q9NZI5 (Gene Accession - NP\_937825 )

**Background:** This gene encodes a member of the grainyhead family of transcription factors. The encoded protein can exist as a homodimer or can form heterodimers with sister-of-mammalian grainyhead or brother-of-mammalian grainyhead. This protein functions as a transcription factor during development. [provided by RefSeq, Jun 2009]

**Immunogen:** Synthetic peptide of human GRHL1

**Applications:** ELISA, WB, IHC

**Recommended Dilutions:** IHC: 50-100;WB: 500-2000;ELISA: 5000-10000

**Host Species:** Rabbit

**Clonality:** Rabbit Polyclonal

**Isotype:** Immunogen-specific rabbit IgG

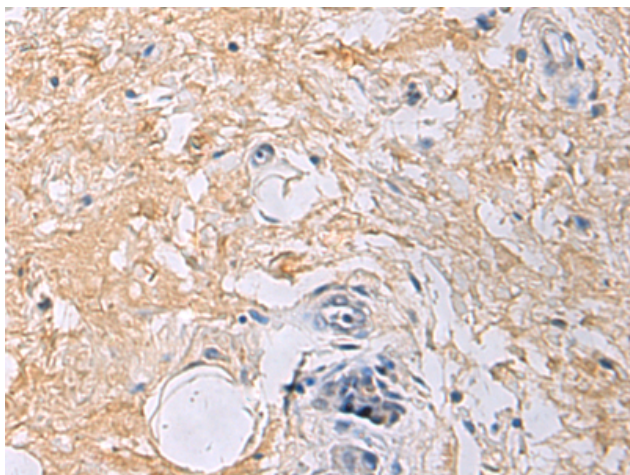
**Purification:** Antigen affinity purification

**Species Reactivity:** Human, Mouse

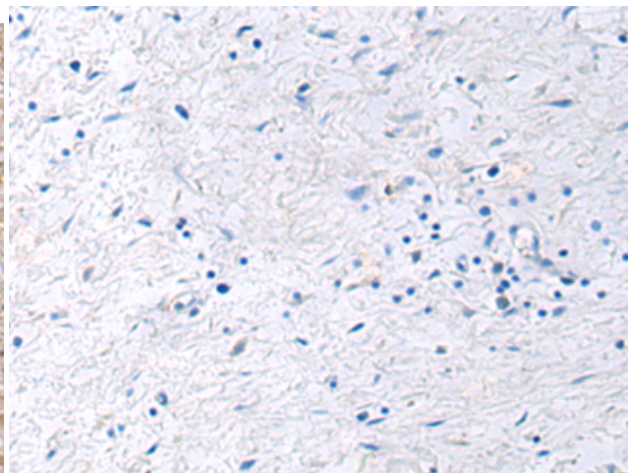
**Constituents:** PBS (without Mg<sup>2+</sup> and Ca<sup>2+</sup>), pH 7.4, 150 mM NaCl, 0.05% Sodium Azide and 40% glycerol

**Research Areas:** Epigenetics and Nuclear Signaling

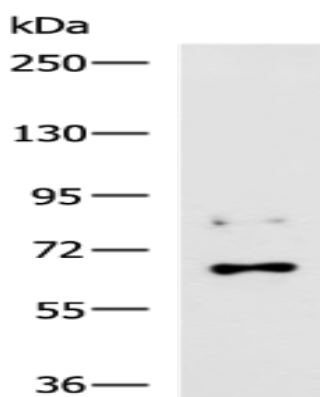
**Storage & Shipping:** Store at -20°C. Avoid repeated freezing and thawing



Immunohistochemistry analysis of paraffin embedded Human gastric cancer using 215914 (GRHL1 Antibody) at a dilution of 1/45 (Cytoplasm).



In comparison with the IHC on the left, the same paraffin-embedded Human gastric cancer is first treated with the synthetic peptide and then with 215914 (Anti-GRHL1 Antibody) at dilution 1/45.



Gel: 6% SDS-PAGE, Lysate: 40  $\mu$ g;  
Lane: Mouse brain tissue lysate;  
Primary antibody: 215914 (GRHL1 Antibody) at dilution 1/650;  
Secondary antibody: HRP-conjugated Goat anti rabbit IgG at 1/5000 dilution;  
Exposure time: 3 minutes