

## GRB2 RABBIT PAB

**Cat.#:** N226063

**Product Name:** Anti-GRB2 Rabbit pAb

**Synonyms:** GRB2; ASH; Growth factor receptor-bound protein 2; Adapter protein GRB2; Protein Ash; SH2/SH3 adapter GRB2

**UNIPROT ID:** P62993

**Background:** Adapter protein that provides a critical link between cell surface growth factor receptors and the Ras signaling pathway.

**Immunogen:** A synthetic peptide of human GRB2

**Applications:** WB,IHC-P,IP

**Recommended Dilutions:** WB: 1/500-1/1000 IHC: 1/50-1/100 IP: 1/20

**Host Species:** Rabbit

**Clonality:** Rabbit Polyclonal

**Clone ID:** -

**MW:** Calculated MW: 25 kDa; Observed MW: 25 kDa

**Isotype:** IgG

**Purification:** Affinity Purified

**Species Reactivity:** Human,Mouse,Rat

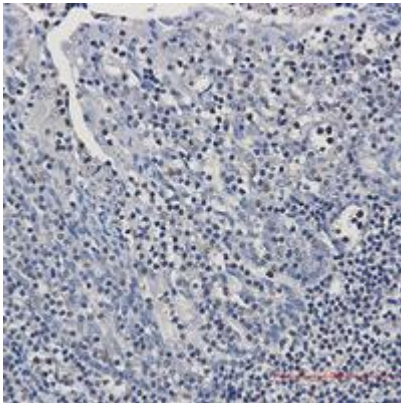
**Conjugation:** Unconjugated

**Modification:** Unmodified

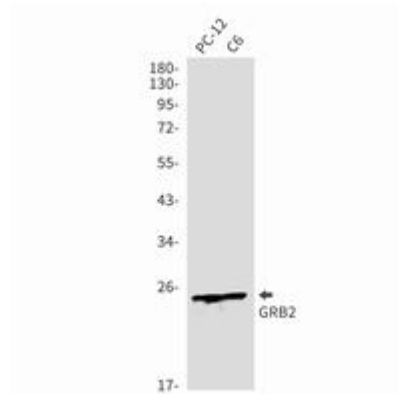
**Constituents:** PBS (without Mg<sup>2+</sup> and Ca<sup>2+</sup>), pH 7.3 containing 50% glycerol, 0.5% BSA and 0.02% sodium azide

**Research Areas:** Signal Transduction

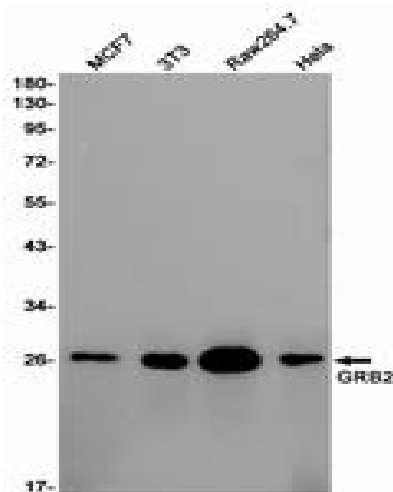
**Storage & Shipping:** Store at -20°C. Avoid repeated freezing and thawing



Immunohistochemistry analysis of paraffin-embedded Human tonsil using GRB2 antibody. High-pressure and temperature Sodium Citrate pH 6.0 was used for antigen retrieval.



Western blot analysis of GRB2 in PC-12, C6 lysates using GRB2 antibody.



Western blot analysis of GRB2 in MCF-7, 3T3, Raw264.7, Hela lysates using GRB2 antibody.