

GPR91 RABBIT PAB

Cat.#: N225498

Product Name: Anti-GPR91 Rabbit pAb

Synonyms: GPR91

UNIPROT ID: Q9BXA5

Background: Receptor for succinate.

Immunogen: The antiserum was produced against synthesized peptide derived from human SUCNR1. AA range:100-149

Applications: WB,ICC/IF,ELISA

Recommended Dilutions: WB: 1/500-1/1000 IF: 1/50-1/200 ELISA: 1/10000

Host Species: Rabbit

Clonality: Rabbit Polyclonal

Clone ID: -

MW: Calculated MW: 39 kDa; Observed MW: 39 kDa

Isotype: IgG

Purification: Affinity Chromatography

Species Reactivity: Human,Mouse,Rat

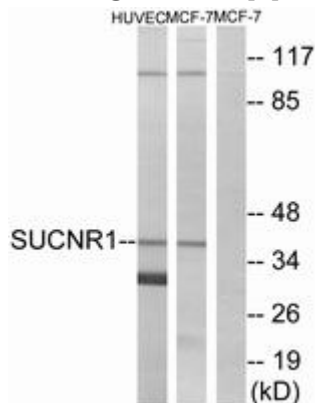
Conjugation: Unconjugated

Modification: Unmodified

Constituents: PBS (without Mg²⁺ and Ca²⁺), pH 7.3 containing 50% glycerol, 0.5% BSA and 0.02% sodium azide

Research Areas: Signal Transduction

Storage & Shipping: Store at -20°C. Avoid repeated freezing and thawing



Western blot analysis of GPR91 in HUVEC and MCF-7 lysates using SUCNR1 antibody. The lane on the right is blocked with the synthesized peptide.



Product Description

Pioneering GTPase and Oncogene Product Development since 2010
