

GPR89A/GPR89B RABBIT PAB

Cat.#: S222140

Product Name: Anti-GPR89A/GPR89B Rabbit Polyclonal Antibody

Synonyms: GPHR; GPR89; SH120; GPR89B; GPR89C; UNQ192

UNIPROT ID: B7ZAA6/P0CG08 (Gene Accession - NP_057418)

Background: GPR89A is a nearly identical copy of the GPR89B gene (MIM 612806). Voltage dependent anion channel required for acidification and functions of the Golgi apparatus that may function in counter-ion conductance.

Immunogen: Synthetic peptide of human GPR89A/GPR89B

Applications: ELISA, WB, IHC

Recommended Dilutions: IHC: 20-100;WB: 200-1000;ELISA: 5000-10000

Host Species: Rabbit

Clonality: Rabbit Polyclonal

Isotype: Immunogen-specific rabbit IgG

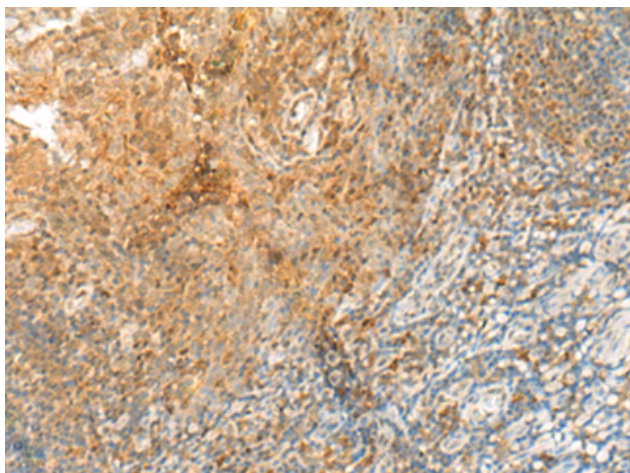
Purification: Antigen affinity purification

Species Reactivity: Human, Mouse

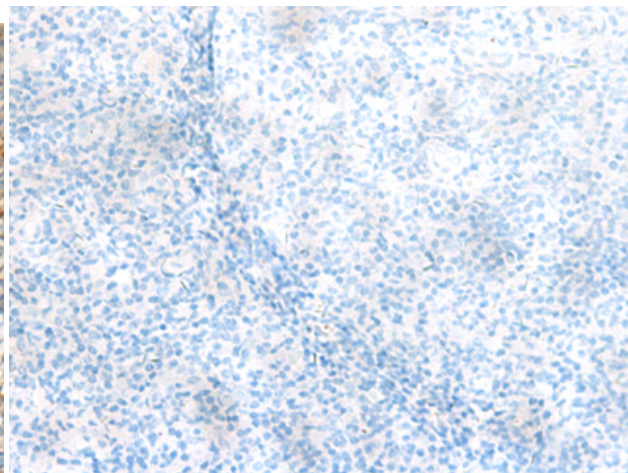
Constituents: PBS (without Mg²⁺ and Ca²⁺), pH 7.4, 150 mM NaCl, 0.05% Sodium Azide and 40% glycerol

Research Areas: Signal Transduction

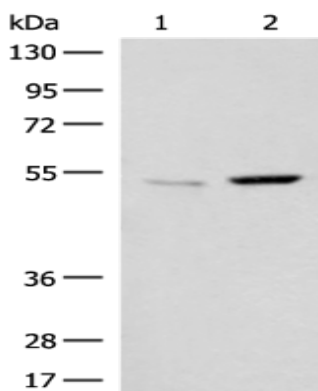
Storage & Shipping: Store at -20°C. Avoid repeated freezing and thawing



Immunohistochemistry analysis of paraffin embedded Human tonsil tissue using 222140(GPR89A/GPR89B Antibody) at a dilution of 1/30(Cell membrane).



In comparison with the IHC on the left, the same paraffin-embedded Human tonsil tissue is first treated with the synthetic peptide and then with 222140(Anti-GPR89A/GPR89B Antibody) at dilution 1/30.



Gel: 8%SDS-PAGE, Lysate: 40 μ g;
 Lane 1-2: Mouse kidney tissue and Human heart tissue lysates;
 Primary antibody: 222140(GPR89A/GPR89B Antibody) at dilution 1/300;
 Secondary antibody: Goat anti rabbit IgG at 1/8000 dilution;
 Exposure time: 1 minute