

GPR75 RABBIT PAB

Cat.#: S222125

Product Name: Anti-GPR75 Rabbit Polyclonal Antibody

Synonyms: GPRchr2; WI31133

UNIPROT ID: O95800 (Gene Accession - NP_006785)

Background: GPR75 is a member of the G protein-coupled receptor family. GPRs are cell surface receptors that activate guanine-nucleotide binding proteins upon the binding of a ligand.

Immunogen: Synthetic peptide of human GPR75

Applications: ELISA, IHC

Recommended Dilutions: IHC: 50-300; ELISA: 5000-10000

Host Species: Rabbit

Clonality: Rabbit Polyclonal

Isotype: Immunogen-specific rabbit IgG

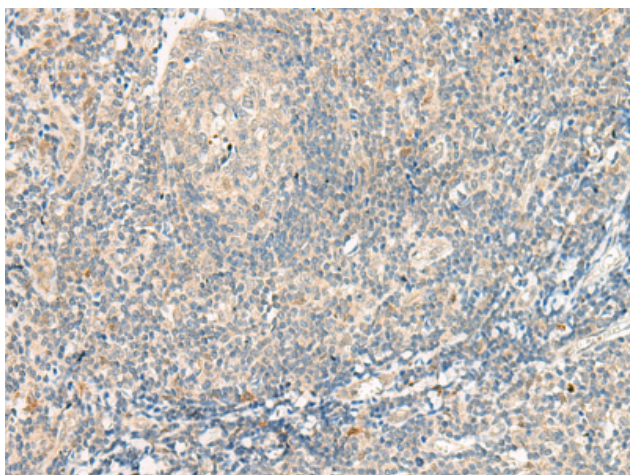
Purification: Antigen affinity purification

Species Reactivity: Human, Mouse

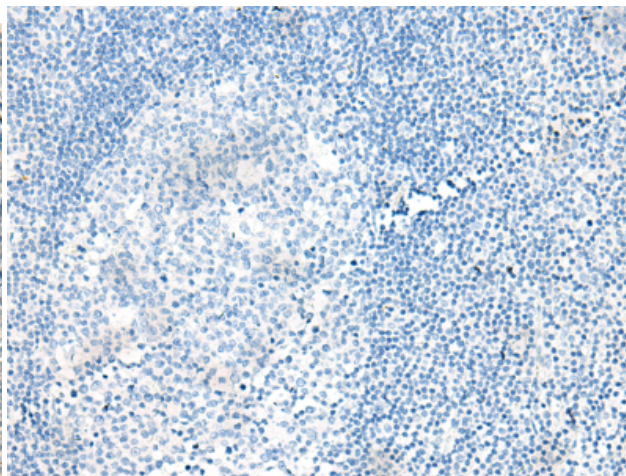
Constituents: PBS (without Mg²⁺ and Ca²⁺), pH 7.4, 150 mM NaCl, 0.05% Sodium Azide and 40% glycerol

Research Areas: Signal Transduction

Storage & Shipping: Store at -20°C. Avoid repeated freezing and thawing



Immunohistochemistry analysis of paraffin embedded Human tonsil tissue using 222125(GPR75 Antibody) at a dilution of 1/95(Cell membrane).



In comparison with the IHC on the left, the same paraffin-embedded Human tonsil tissue is first treated with the synthetic peptide and then with 222125(Anti-GPR75 Antibody) at dilution 1/95.