

## GPR75 RABBIT PAB

**Cat.#:** N225425

**Product Name:** Anti-GPR75 Rabbit pAb

**Synonyms:** Probable G-protein coupled receptor 75

**UNIPROT ID:** O95800

**Background:** G protein-coupled receptor that is activated by the chemokine CCL5/RANTES.

**Immunogen:** The antiserum was produced against synthesized peptide derived from human GPR75. AA range:381-430

**Applications:** WB,ICC/IF,ELISA

**Recommended Dilutions:** WB: 1/500-1/1000 IF: 1/50-1/200 ELISA: 1/10000

**Host Species:** Rabbit

**Clonality:** Rabbit Polyclonal

**Clone ID:** -

**MW:** Calculated MW: 59 kDa; Observed MW: 59 kDa

**Isotype:** IgG

**Purification:** Affinity Purified

**Species Reactivity:** Human,Mouse

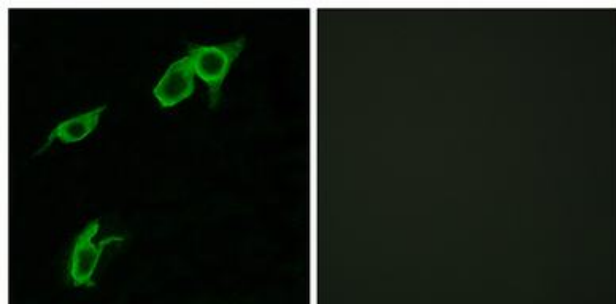
**Conjugation:** Unconjugated

**Modification:** Unmodified

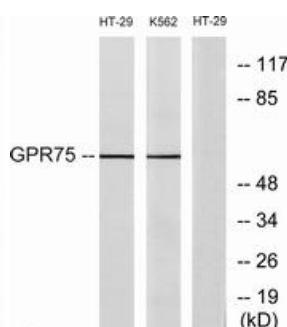
**Constituents:** PBS (without Mg<sup>2+</sup> and Ca<sup>2+</sup>), pH 7.3 containing 50% glycerol, 0.5% BSA and 0.02% sodium azide

**Research Areas:** Signal Transduction

**Storage & Shipping:** Store at -20°C. Avoid repeated freezing and thawing



Immunofluorescence analysis of GPR75 in LOVO using GPR75 antibody. The picture on the right is blocked using the synthesized peptide.



Western blot analysis of GPR75 in HT-29 and K562 lysates using GPR75 antibody. The lane on the right is blocked with the synthesized peptide.