

## GPR62 RABBIT PAB

**Cat.#:** S222122

**Product Name:** Anti-GPR62 Rabbit Polyclonal Antibody

**Synonyms:** GPCR8; KPG\_005

**UNIPROT ID:** Q9BZJ7 (Gene Accession - NP\_543141)

**Background:** Orphan receptor. Expressed in brain; detected in the basal forebrain, frontal cortex, caudate, putamen, thalamus and hippocampus.

**Immunogen:** Synthetic peptide of human GPR62

**Applications:** ELISA, WB, IHC

**Recommended Dilutions:** IHC: 40-200; WB: 500-2000; ELISA: 5000-10000

**Host Species:** Rabbit

**Clonality:** Rabbit Polyclonal

**Isotype:** Immunogen-specific rabbit IgG

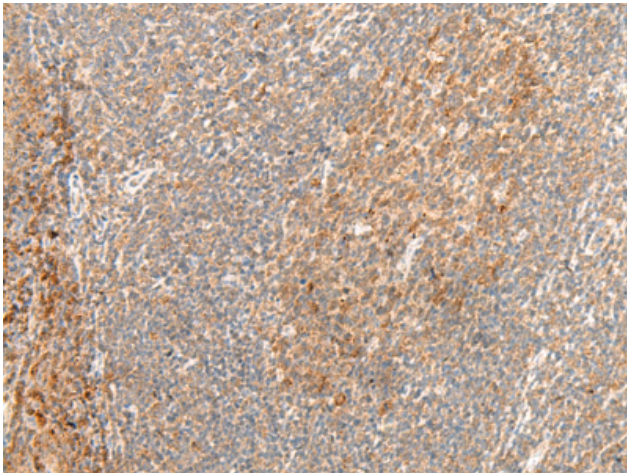
**Purification:** Antigen affinity purification

**Species Reactivity:** Human

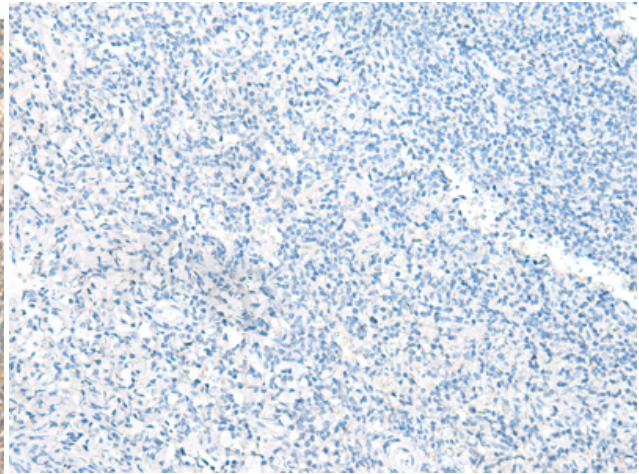
**Constituents:** PBS (without Mg<sup>2+</sup> and Ca<sup>2+</sup>), pH 7.4, 150 mM NaCl, 0.05% Sodium Azide and 40% glycerol

**Research Areas:** Neuroscience

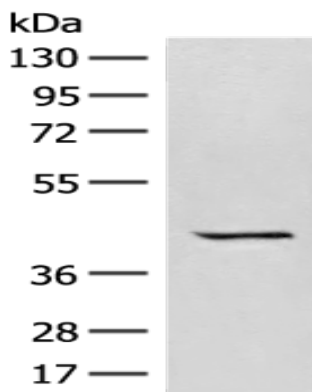
**Storage & Shipping:** Store at -20°C. Avoid repeated freezing and thawing



Immunohistochemistry analysis of paraffin embedded Human tonsil tissue using 222122(GPR62 Antibody) at a dilution of 1/40(Cell membrane).



In comparison with the IHC on the left, the same paraffin-embedded Human tonsil tissue is first treated with the synthetic peptide and then with 222122(Anti-GPR62 Antibody) at dilution 1/40.



Gel: 8%SDS-PAGE, Lysate: 40  $\mu$ g;  
Lane: A549 cell lysate;  
Primary antibody: 222122(GPR62 Antibody) at dilution 1/350;  
Secondary antibody: Goat anti rabbit IgG at 1/8000 dilution;  
Exposure time: 1 minute