

## GPR22 RABBIT PAB

**Cat.#:** S222106

**Product Name:** Anti-GPR22 Rabbit Polyclonal Antibody

**Synonyms:**

**UNIPROT ID:** Q99680 (Gene Accession - NP\_005286 )

**Background:** This gene is a member of the G-protein coupled receptor 1 family and encodes a multi-pass membrane protein.

**Immunogen:** Synthetic peptide of human GPR22

**Applications:** ELISA, WB, IHC

**Recommended Dilutions:** IHC: 40-200;WB: 500-2000;ELISA: 5000-10000

**Host Species:** Rabbit

**Clonality:** Rabbit Polyclonal

**Isotype:** Immunogen-specific rabbit IgG

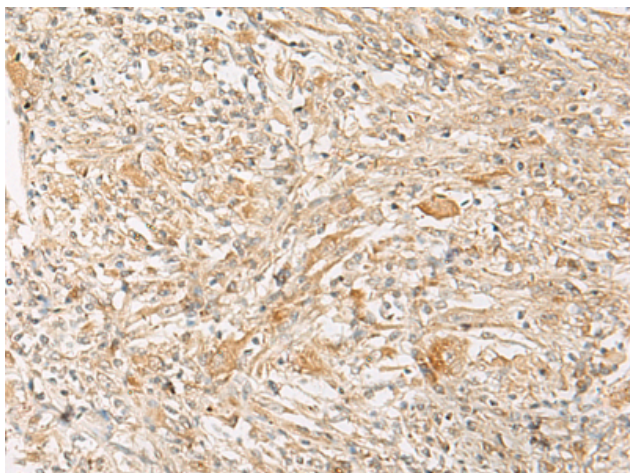
**Purification:** Antigen affinity purification

**Species Reactivity:** Human, Mouse

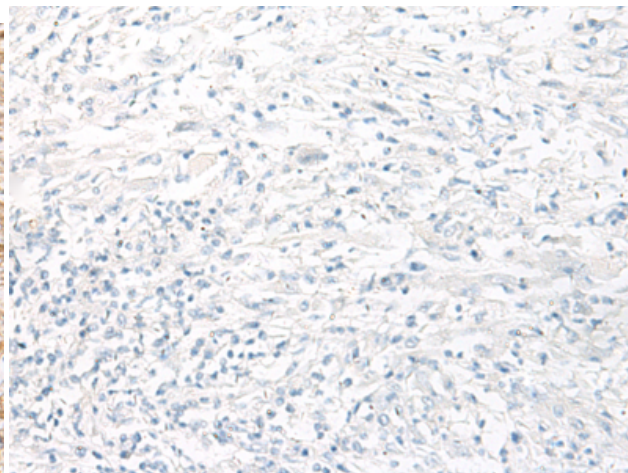
**Constituents:** PBS (without Mg<sup>2+</sup> and Ca<sup>2+</sup>), pH 7.4, 150 mM NaCl, 0.05% Sodium Azide and 40% glycerol

**Research Areas:** Signal Transduction

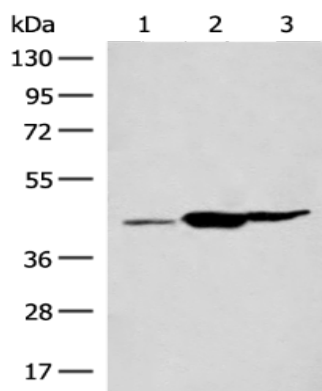
**Storage & Shipping:** Store at -20°C. Avoid repeated freezing and thawing



Immunohistochemistry analysis of paraffin embedded Human liver cancer tissue using 222106(GPR22 Antibody) at a dilution of 1/50(Cell membrane).



In comparison with the IHC on the left, the same paraffin-embedded Human liver cancer tissue is first treated with the synthetic peptide and then with 222106(Anti-GPR22 Antibody) at dilution 1/50.



Gel: 8%SDS-PAGE, Lysate: 40  $\mu$ g;  
Lane 1-3: Mouse liver tissue, Mouse kidney tissue, Rat brain tissue lysates;  
Primary antibody: 222106(GPR22 Antibody) at dilution 1/500;  
Secondary antibody: Goat anti rabbit IgG at 1/8000 dilution;  
Exposure time: 10 seconds