

## GPR19 RABBIT PAB

**Cat.#:** S215870

**Product Name:** Anti-GPR19 Rabbit Polyclonal Antibody

**Synonyms:**

**UNIPROT ID:** Q15760 (Gene Accession - NP\_006134 )

**Background:** Orphan receptor.

**Immunogen:** Synthetic peptide of human GPR19

**Applications:** ELISA, IHC

**Recommended Dilutions:** IHC: 25-100; ELISA: 5000-10000

**Host Species:** Rabbit

**Clonality:** Rabbit Polyclonal

**Isotype:** Immunogen-specific rabbit IgG

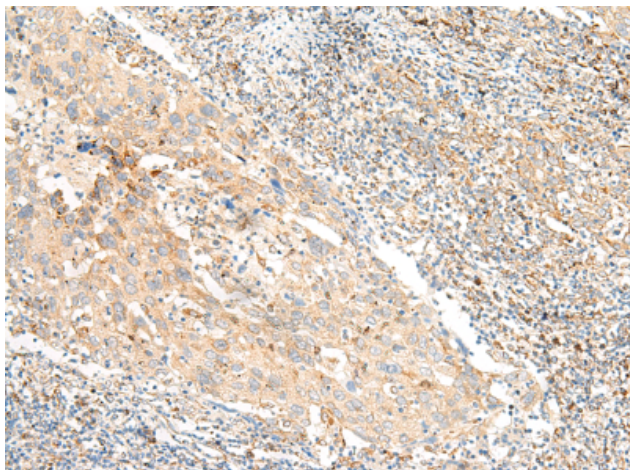
**Purification:** Antigen affinity purification

**Species Reactivity:** Human, Mouse, Rat

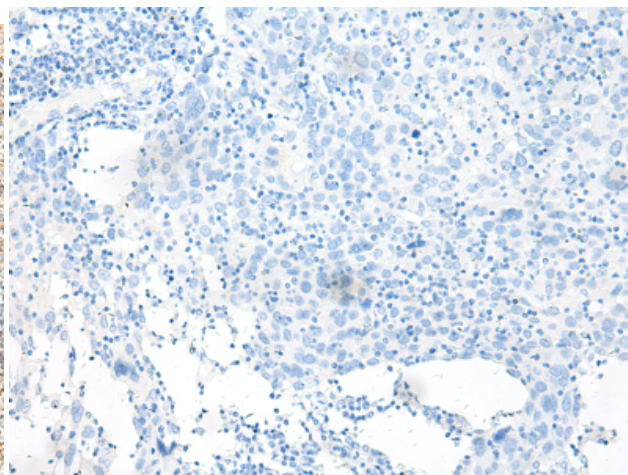
**Constituents:** PBS (without Mg<sup>2+</sup> and Ca<sup>2+</sup>), pH 7.4, 150 mM NaCl, 0.05% Sodium Azide and 40% glycerol

**Research Areas:** Signal Transduction, Neuroscience

**Storage & Shipping:** Store at -20°C. Avoid repeated freezing and thawing



Immunohistochemistry analysis of paraffin embedded Human cervical cancer tissue using 215870(GPR19 Antibody) at a dilution of 1/25(Cell membrane).



In comparison with the IHC on the left, the same paraffin-embedded Human cervical cancer tissue is first treated with the synthetic peptide and then with 215870(Anti-GPR19 Antibody) at dilution 1/25.