

## GPR182 RABBIT PAB

**Cat.#:** S220385

**Product Name:** Anti-GPR182 Rabbit Polyclonal Antibody

**Synonyms:** AMR; 7TMR; ADMR; AM-R; G10D; gamrh; hrhAMR

**UNIPROT ID:** O15218 (Gene Accession - NP\_009195 )

**Background:** Adrenomedullin is a potent vasodilator peptide that exerts major effects on cardiovascular function. This gene encodes a seven-transmembrane protein that belongs to the family 1 of G-protein coupled receptors. Studies of the rat counterpart suggest that the encoded protein may function as a receptor for adrenomedullin.

**Immunogen:** Synthetic peptide of human GPR182

**Applications:** ELISA, WB, IHC

**Recommended Dilutions:** IHC: 15-50;WB: 500-2000;ELISA: 2000-5000

**Host Species:** Rabbit

**Clonality:** Rabbit Polyclonal

**Isotype:** Immunogen-specific rabbit IgG

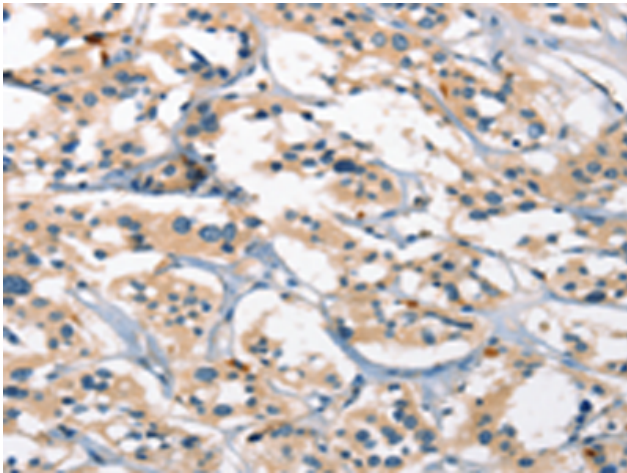
**Purification:** Antigen affinity purification

**Species Reactivity:** Human, Mouse

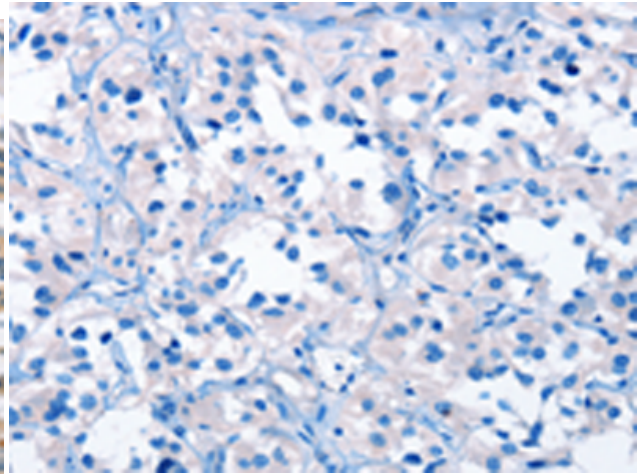
**Constituents:** PBS (without Mg<sup>2+</sup> and Ca<sup>2+</sup>), pH 7.4, 150 mM NaCl, 0.05% Sodium Azide and 40% glycerol

**Research Areas:** Signal Transduction, Cancer, Cardiovascular

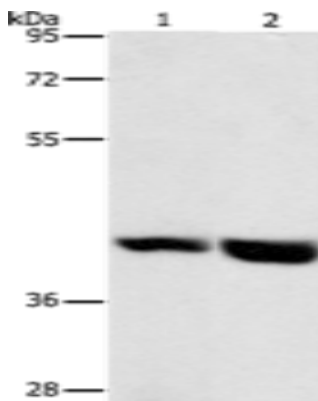
**Storage & Shipping:** Store at -20°C. Avoid repeated freezing and thawing



Immunohistochemistry analysis of paraffin embedded Human thyroid cancer tissue using 220385(GPR182 Antibody) at a dilution of 1/25(Cytoplasm).



In comparison with the IHC on the left, the same paraffin-embedded Human thyroid cancer tissue is first treated with the synthetic peptide and then with 220385(Anti-GPR182 Antibody) at dilution 1/25.



Gel: 8%SDS-PAGE, Lysate: 40  $\mu$ g;  
Lane 1-2: Mouse heart tissue, Mouse liver tissue;  
Primary antibody: 220385(GPR182 Antibody) at dilution 1/1000;  
Secondary antibody: Goat anti rabbit IgG at 1/8000 dilution;  
Exposure time: 2 minutes