

## GPR18 RABBIT PAB

**Cat.#:** S222105

**Product Name:** Anti-GPR18 Rabbit Polyclonal Antibody

**Synonyms:**

**UNIPROT ID:** Q14330 (Gene Accession - NP\_005283 )

**Background:** Receptor for endocannabinoid N-arachidonyl glycine (NAGly) (PubMed:16844083, PubMed:24762058, PubMed:27572937). However, conflicting results about the role of NAGly as an agonist are reported (PubMed:27018161). Can also be activated by plant-derived and synthetic cannabinoid agonists (PubMed:24762058). The activity of this receptor is mediated by G proteins which inhibit adenylyl cyclase (PubMed:16844083). May contribute to regulation of the immune system. Is required for normal homeostasis of CD8+ subsets of intraepithelial lymphocytes (IELs) (CD8alphaalpha and CD8alphabeta IELs) in small intestine by supporting preferential migration of CD8alphaalpha T-cells to intraepithelial compartment over lamina propria compartment, and by mediating their reconstitution into small intestine after bone marrow transplant (By similarity). Plays a role in hypotensive responses, mediating reduction in intraocular and blood pressure (By similarity). Mediates NAGly-induced process of reorganization of actin filaments and induction of acrosomal exocytosis (PubMed:27572937).

**Immunogen:** Synthetic peptide of human GPR18

**Applications:** ELISA, IHC

**Recommended Dilutions:** IHC: 25-50; ELISA: 500-1000

**Host Species:** Rabbit

**Clonality:** Rabbit Polyclonal

**Isotype:** Immunogen-specific rabbit IgG

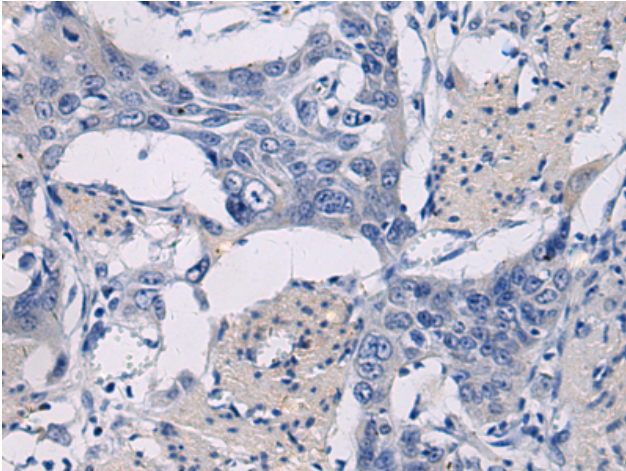
**Purification:** Antigen affinity purification

**Species Reactivity:** Human, Mouse, Rat

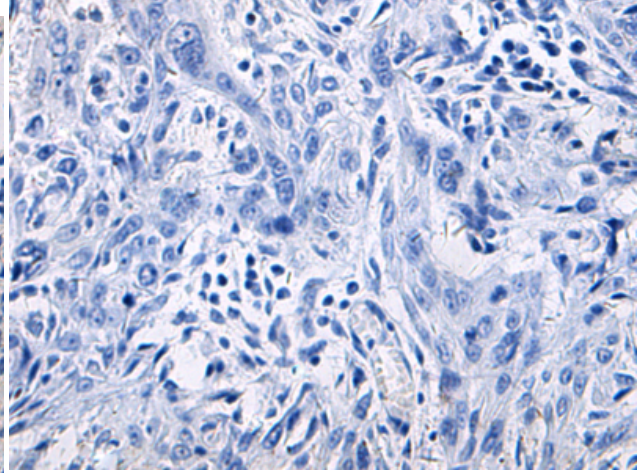
**Constituents:** PBS (without Mg<sup>2+</sup> and Ca<sup>2+</sup>), pH 7.4, 150 mM NaCl, 0.05% Sodium Azide and 40% glycerol

**Research Areas:** Signal Transduction, Neuroscience

**Storage & Shipping:** Store at -20°C. Avoid repeated freezing and thawing



Immunohistochemistry analysis of paraffin embedded Human esophagus cancer tissue using 222105(GPR18 Antibody) at a dilution of 1/20(Cytoplasm).



In comparison with the IHC on the left, the same paraffin-embedded Human esophagus cancer tissue is first treated with the synthetic peptide and then with 222105(Anti-GPR18 Antibody) at dilution 1/20.