

GPR160 RABBIT PAB

Cat.#: S222128

Product Name: Anti-GPR160 Rabbit Polyclonal Antibody

Synonyms: GPCR1; GPCR150

UNIPROT ID: Q9UJ42 (Gene Accession - NP_055188)

Background: Orphan receptor.

Immunogen: Synthetic peptide of human GPR160

Applications: ELISA, IHC

Recommended Dilutions: IHC: 30-150; ELISA: 5000-10000

Host Species: Rabbit

Clonality: Rabbit Polyclonal

Isotype: Immunogen-specific rabbit IgG

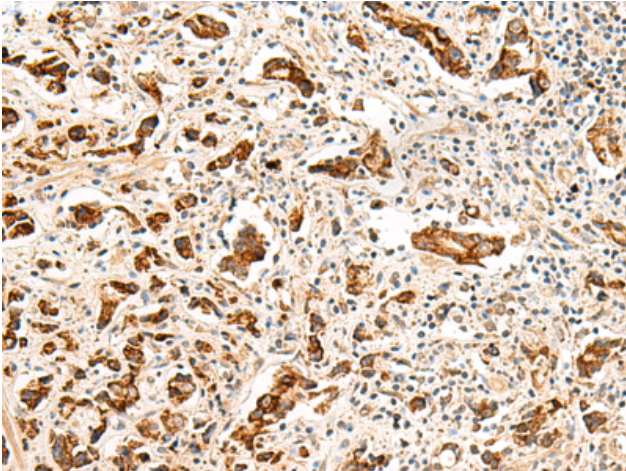
Purification: Antigen affinity purification

Species Reactivity: Human

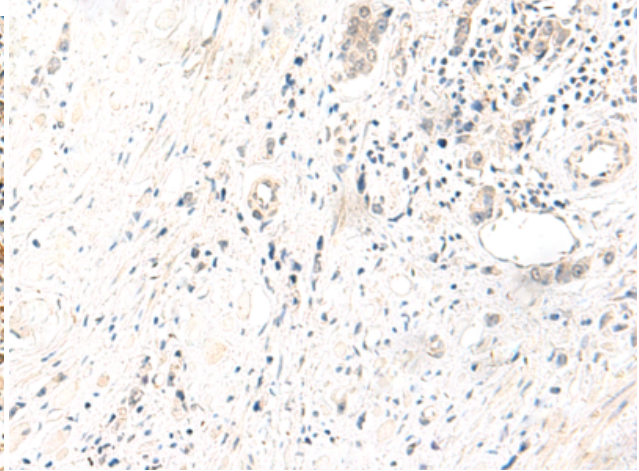
Constituents: PBS (without Mg²⁺ and Ca²⁺), pH 7.4, 150 mM NaCl, 0.05% Sodium Azide and 40% glycerol

Research Areas: Signal Transduction

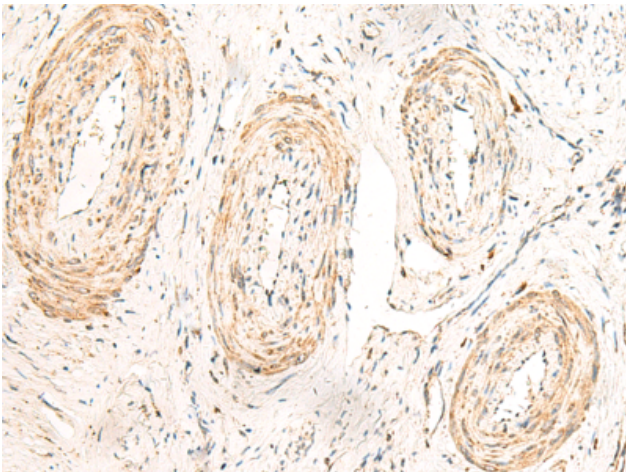
Storage & Shipping: Store at -20°C. Avoid repeated freezing and thawing



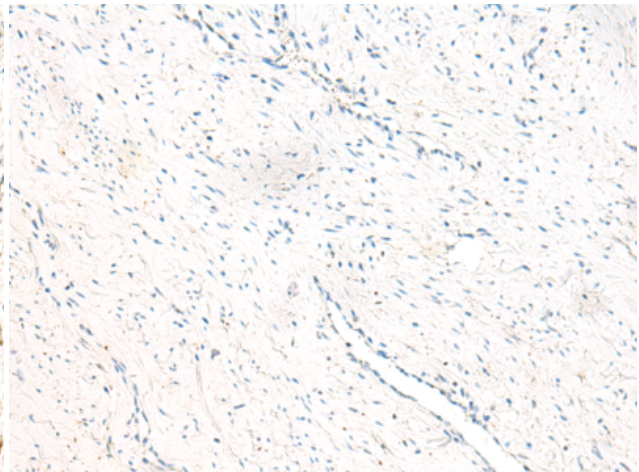
Immunohistochemistry analysis of paraffin embedded Human prostate cancer tissue using 222128(GPR160 Antibody) at a dilution of 1/35(Cell membrane and Cytoplasm).



In comparison with the IHC on the left, the same paraffin-embedded Human prostate cancer tissue is first treated with the synthetic peptide and then with 222128(Anti-GPR160 Antibody) at dilution 1/35.



The image on the left is immunohistochemistry of paraffin-embedded Human cervical cancer tissue using 222128(Anti-GPR160 Antibody) at a dilution of 1/35.



In comparison with the IHC on the left, the same paraffin-embedded Human cervical cancer tissue is first treated with synthetic peptide and then with D264094(Anti-GPR160 Antibody) at dilution 1/35.