

## GPR158 RABBIT PAB

**Cat.#:** N225446

**Product Name:** Anti-GPR158 Rabbit pAb

**Synonyms:** Probable G-protein coupled receptor 158

**UNIPROT ID:** Q5T848

**Background:** Orphan receptor.

**Immunogen:** The antiserum was produced against synthesized peptide derived from human GPR158. AA range:1-50

**Applications:** WB,IHC-F,IHC-P,ICC/IF,ELISA

**Recommended Dilutions:** WB: 1/500-1/1000 IHC: 1/50-1/100 IF: 1/50-1/200 ELISA: 1/10000

**Host Species:** Rabbit

**Clonality:** Rabbit Polyclonal

**Clone ID:** -

**MW:** Calculated MW: 135 kDa; Observed MW: 150 kDa

**Isotype:** IgG

**Purification:** Affinity Chromatography

**Species Reactivity:** Human,Mouse

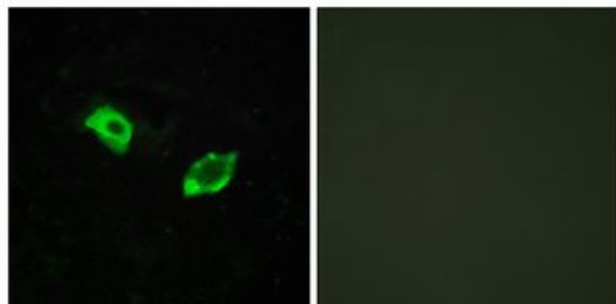
**Conjugation:** Unconjugated

**Modification:** Unmodified

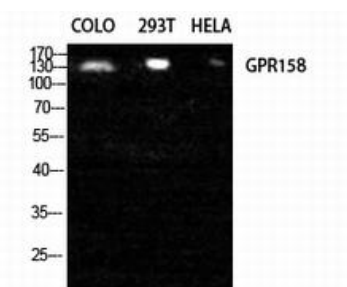
**Constituents:** PBS (without Mg<sup>2+</sup> and Ca<sup>2+</sup>), pH 7.3 containing 50% glycerol, 0.5% BSA and 0.02% sodium azide

**Research Areas:** Neuroscience

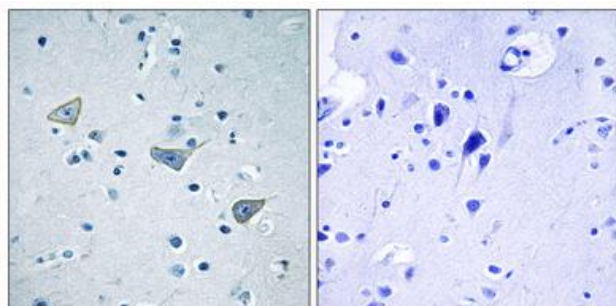
**Storage & Shipping:** Store at -20°C. Avoid repeated freezing and thawing



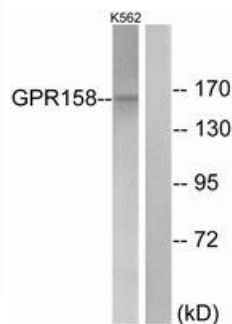
Immunofluorescence analysis of GPR158 in HUVEC using GPR158 antibody. The picture on the right is blocked using the synthesized peptide.



Western blot analysis of GPR158 in COLO, 293T, HELA lysates using GPR158 antibody.



Immunohistochemistry analysis of paraffin-embedded Human brain tissue using GPR158 antibody. High-pressure and temperature Sodium Citrate pH 6.0 was used for antigen retrieval. Sample with blocking peptide on the right.



Western blot analysis of GPR158 in K562 lysates using GPR158 antibody. The lane on the right is blocked with the synthesized peptide.