

## GPR151 RABBIT PAB

**Cat.#:** S222095

**Product Name:** Anti-GPR151 Rabbit Polyclonal Antibody

**Synonyms:** GPCR; PGR7; GALR4; GALRL; GPCR-2037

**UNIPROT ID:** Q8TDV0 (Gene Accession - NP\_919227 )

**Background:** The protein encoded by this gene is similar to the galanin receptor subfamily of G protein-coupled receptors. The encoded protein is found predominantly in the central nervous system.

**Immunogen:** Synthetic peptide of human GPR151

**Applications:** ELISA, IHC

**Recommended Dilutions:** IHC: 30-150; ELISA: 5000-10000

**Host Species:** Rabbit

**Clonality:** Rabbit Polyclonal

**Isotype:** Immunogen-specific rabbit IgG

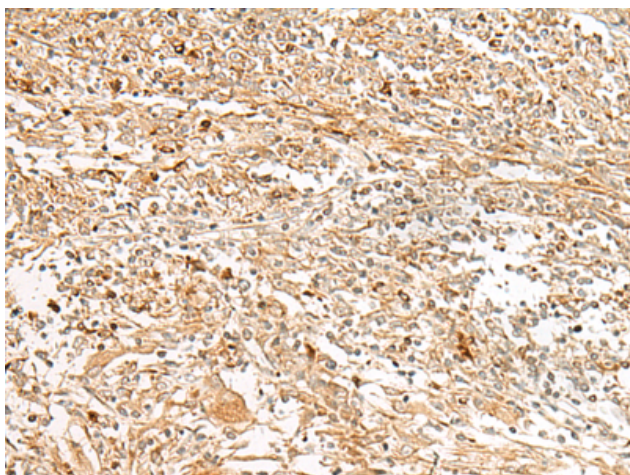
**Purification:** Antigen affinity purification

**Species Reactivity:** Human

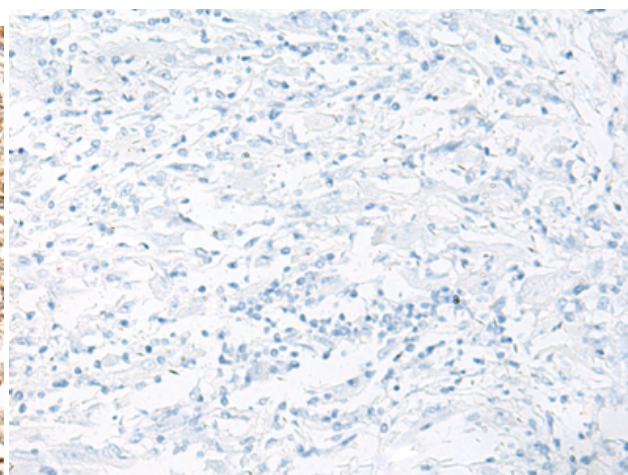
**Constituents:** PBS (without Mg<sup>2+</sup> and Ca<sup>2+</sup>), pH 7.4, 150 mM NaCl, 0.05% Sodium Azide and 40% glycerol

**Research Areas:** Signal Transduction

**Storage & Shipping:** Store at -20°C. Avoid repeated freezing and thawing



Immunohistochemistry analysis of paraffin embedded Human liver cancer tissue using 222095(GPR151 Antibody) at a dilution of 1/30(Cell membrane).



In comparison with the IHC on the left, the same paraffin-embedded Human liver cancer tissue is first treated with the synthetic peptide and then with 222095(Anti-GPR151 Antibody) at dilution 1/30.