

## GPKOW RABBIT PAB

**Cat.#:** S219141

**Product Name:** Anti-GPKOW Rabbit Polyclonal Antibody

**Synonyms:** T54; Spp2; GPATC5; GPATCH5

**UNIPROT ID:** Q92917 (Gene Accession - BC000397 )

**Background:** This gene encodes a putative RNA-binding protein containing G-patch and KOW (Kyprides, Ouzounis, Woese) domains. The encoded protein interacts directly with protein kinase A and protein kinase X and is also found associated with the spliceosome.

**Immunogen:** Fusion protein of human GPKOW

**Applications:** ELISA, WB, IHC

**Recommended Dilutions:** IHC: 100-500;WB: 1000-5000;ELISA: 5000-10000

**Host Species:** Rabbit

**Clonality:** Rabbit Polyclonal

**Isotype:** Immunogen-specific rabbit IgG

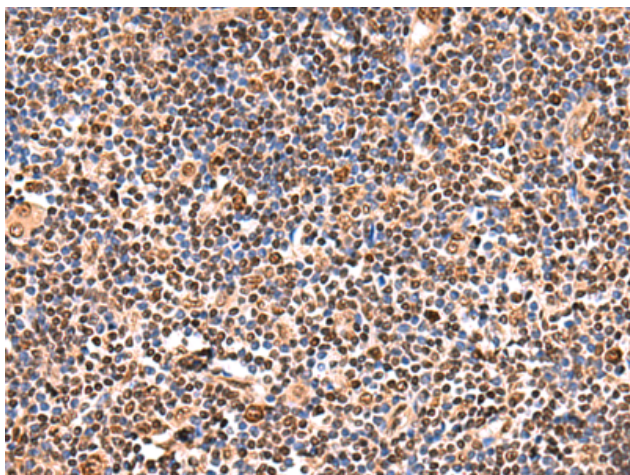
**Purification:** Antigen affinity purification

**Species Reactivity:** Human

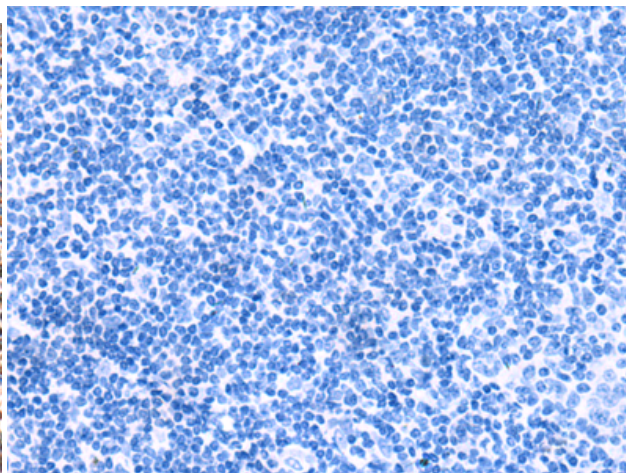
**Constituents:** PBS (without Mg<sup>2+</sup> and Ca<sup>2+</sup>), pH 7.4, 150 mM NaCl, 0.05% Sodium Azide and 40% glycerol

**Research Areas:** Cell Biology

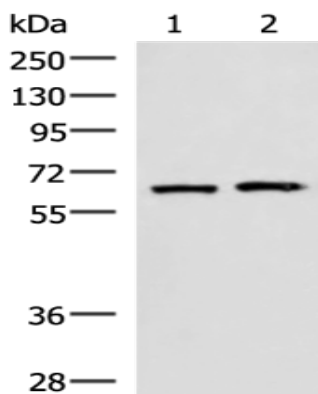
**Storage & Shipping:** Store at -20°C. Avoid repeated freezing and thawing



Immunohistochemistry analysis of paraffin embedded Human tonsil tissue using 219141(GPKOW Antibody) at a dilution of 1/140(Nucleus).



In comparison with the IHC on the left, the same paraffin-embedded Human tonsil tissue is first treated with the fusion protein and then with 219141(Anti-GPKOW Antibody) at dilution 1/140.



Gel: 8%SDS-PAGE, Lysate: 40  $\mu$ g;  
Lane 1-2: 293T and Jurkat cell lysates;  
Primary antibody: 219141(GPKOW Antibody) at dilution 1/2000;  
Secondary antibody: HRP-conjugated Goat anti rabbit IgG at 1/5000 dilution;  
Exposure time: 30 seconds