

## GPD2 RABBIT MAB

**Cat.#:** N262300

**Product Name:** Anti-GPD2 Rabbit Monoclonal Antibody

**Synonyms:** GDH2; GPDM; mGPDH

**UNIPROT ID:** P43304

**Background:** Glycerol-3-phosphate dehydrogenase, mitochondrial

**Immunogen:** A synthetic peptide of human GPD2

**Applications:** WB,IP

**Recommended Dilutions:** WB: 1/500-1/1000 IP: 1/20

**Host Species:** Rabbit

**Clonality:** Rabbit Monoclonal

**Clone ID:** R02-5B9

**MW:** Calculated MW: 81 kDa; Observed MW: 81 kDa

**Isotype:** IgG

**Purification:** Affinity Purified

**Species Reactivity:** Human,Mouse,Rat

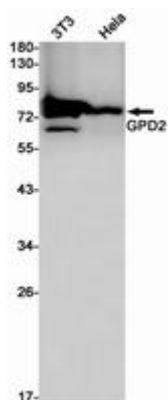
**Conjugation:** Unconjugated

**Modification:** Unmodified

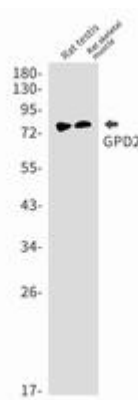
**Constituents:** PBS (without Mg<sup>2+</sup> and Ca<sup>2+</sup>), pH 7.3 containing 50% glycerol, 0.5% BSA and 0.02% sodium azide

**Research Areas:** Tags & Cell Markers

**Storage & Shipping:** Store at -20°C. Avoid repeated freezing and thawing



Western blot analysis of GPD2 in K562, HeLa lysates using GPD2 antibody.



Western blot analysis of GPD2 in rat testis, rat skeletal muscle lysates using GPD2 antibody.



# Product Description

Pioneering GTPase and Oncogene Product Development since 2010

---