

GPC2 RABBIT PAB

Cat.#: S221345

Product Name: Anti-GPC2 Rabbit Polyclonal Antibody

Synonyms:

UNIPROT ID: Q8NI58 (Gene Accession - NP_689955)

Background: Predicted to be involved in several processes, including positive regulation of neuron projection development; regulation of protein localization to membrane; and smoothed signaling pathway. Located in endoplasmic reticulum. [provided by Alliance of Genome Resources, Apr 2022]

Immunogen: Synthetic peptide of human GPC2

Applications: ELISA, IHC

Recommended Dilutions: IHC: 50-200; ELISA: 5000-10000

Host Species: Rabbit

Clonality: Rabbit Polyclonal

Isotype: Immunogen-specific rabbit IgG

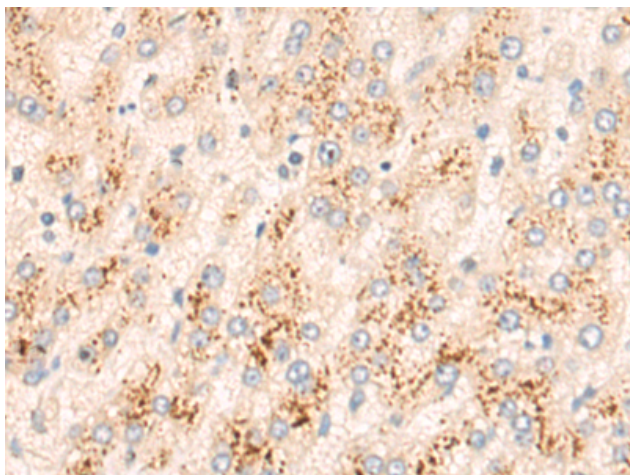
Purification: Antigen affinity purification

Species Reactivity: Human

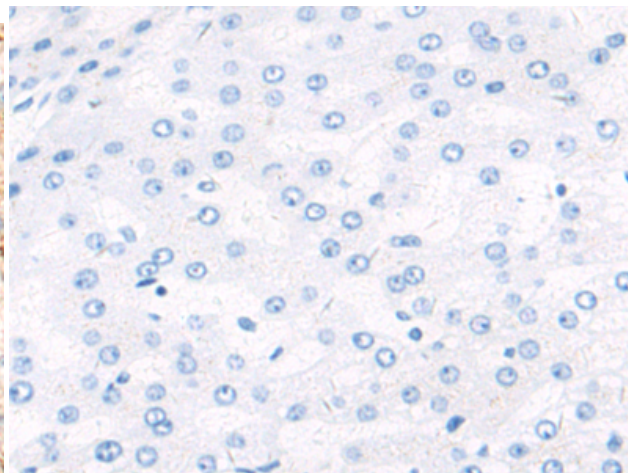
Constituents: PBS (without Mg²⁺ and Ca²⁺), pH 7.4, 150 mM NaCl, 0.05% Sodium Azide and 40% glycerol

Research Areas: Neuroscience

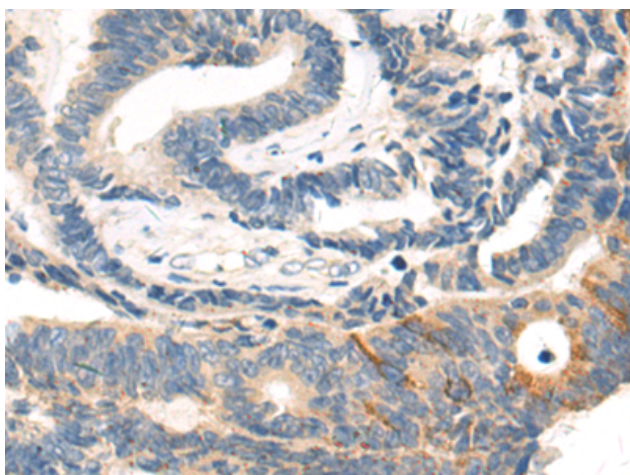
Storage & Shipping: Store at -20°C. Avoid repeated freezing and thawing



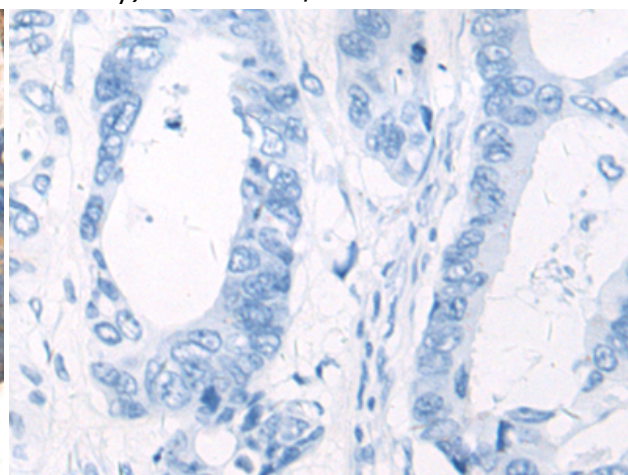
Immunohistochemistry analysis of paraffin embedded Human liver cancer tissue using 221345(GPC2 Antibody) at a dilution of 1/50(Cytoplasm).



In comparison with the IHC on the left, the same paraffin-embedded Human liver cancer tissue is first treated with the synthetic peptide and then with 221345(Anti-GPC2 Antibody) at dilution 1/50.



The image on the left is immunohistochemistry of paraffin-embedded Human colorectal cancer tissue using 221345(Anti-GPC2 Antibody) at a dilution of 1/50.



In comparison with the IHC on the left, the same paraffin-embedded Human colorectal cancer tissue is first treated with synthetic peptide and then with D262897(Anti-GPC2 Antibody) at dilution 1/50.