

GPC1(1B8) IGG1 CHIMERIC MAB

Cat.#: 28567

Product Name: Anti-GPC1(1B8) IgG1 Chimeric Monoclonal Antibody

Synonyms: Glypican 1;PC1

Description: Anti-GPC1 antibody(1B8) IgG1 Chimeric Monoclonal Antibody

Background: Cell surface heparan sulfate proteoglycans are composed of a membrane-associated protein core substituted with a variable number of heparan sulfate chains. Members of the glypican-related integral membrane proteoglycan family (GRIPS) contain a core protein anchored to the cytoplasmic membrane via a glycosyl phosphatidylinositol linkage. These proteins may play a role in the control of cell division and growth regulation. [provided by RefSeq, Jul 2008]

Applications: Flow Cyt

Recommended Dilutions: Flow Cyt 1/100

Host Species: Rabbit

Isotype: Rabbit/Human Fc chimeric IgG1

Purification: Purified from cell culture supernatant by affinity chromatography

Species Reactivity: Human GPC1

Constituents: Lyophilized from sterile PBS, pH 7.4. 5 % – 8% trehalose is added as protectants before lyophilization.

Storage & Shipping: Store at -20°C to -80°C for 12 months in lyophilized form. After reconstitution, if not intended for use within a month, aliquot and store at -80°C (Avoid repeated freezing and thawing).

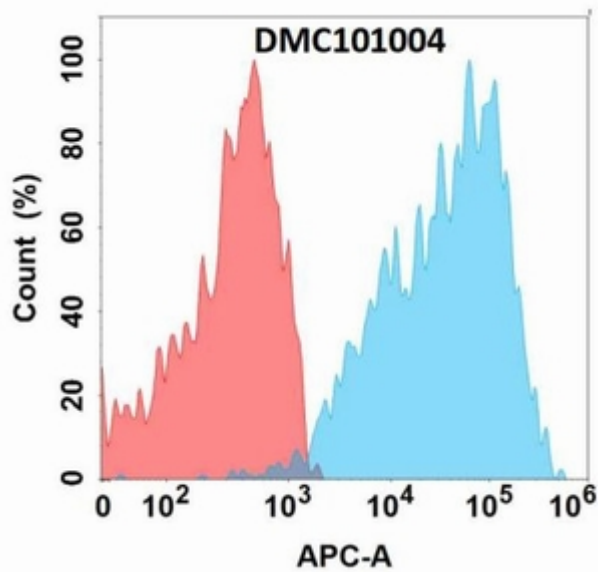


Figure 1. Flow cytometry analysis with Anti-GPC1 (1B8) mAb on Expi293 cells transfected with human GPC1 (Blue histogram) or Expi293 transfected with irrelevant protein (Red histogram).