

GPA33 RABBIT PAB

Cat.#: S216537

Product Name: Anti-GPA33 Rabbit Polyclonal Antibody

Synonyms: A33

UNIPROT ID: Q99795 (Gene Accession - BC069723)

Background: The glycoprotein encoded by this gene is a cell surface antigen that is expressed in greater than 95% of human colon cancers. The open reading frame encodes a 319-amino acid polypeptide having a putative secretory signal sequence and 3 potential glycosylation sites. The predicted mature protein has a 213-amino acid extracellular region, a single transmembrane domain, and a 62-amino acid intracellular tail. The sequence of the extracellular region contains 2 domains characteristic of the CD2 subgroup of the immunoglobulin (Ig) superfamily.

Immunogen: Fusion protein of human GPA33

Applications: ELISA, WB, IHC

Recommended Dilutions: IHC: 50-200;WB: 1000-5000;ELISA: 5000-10000

Host Species: Rabbit

Clonality: Rabbit Polyclonal

Isotype: Immunogen-specific rabbit IgG

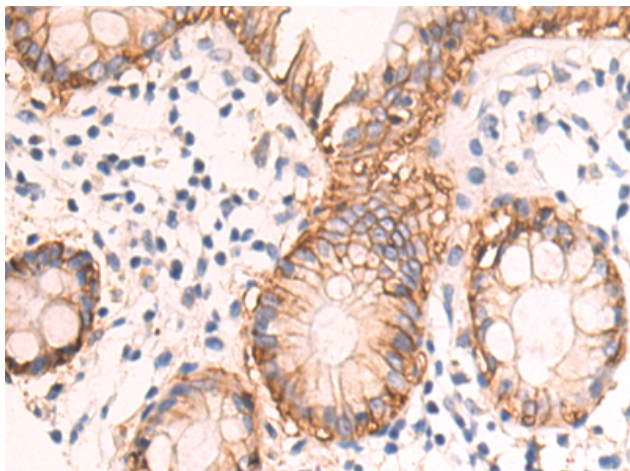
Purification: Antigen affinity purification

Species Reactivity: Human, Mouse

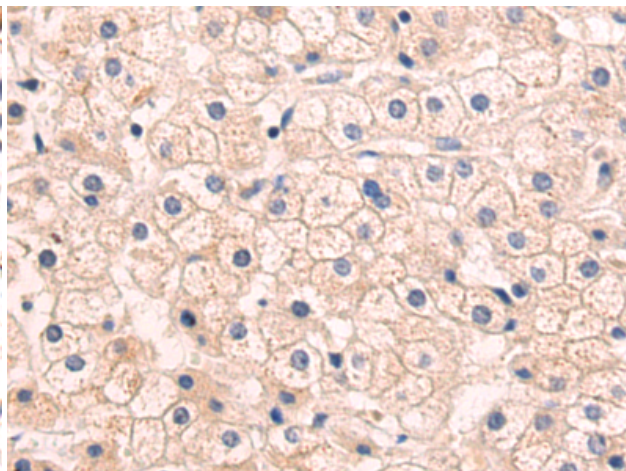
Constituents: PBS (without Mg²⁺ and Ca²⁺), pH 7.4, 150 mM NaCl, 0.05% Sodium Azide and 40% glycerol

Research Areas: Cancer

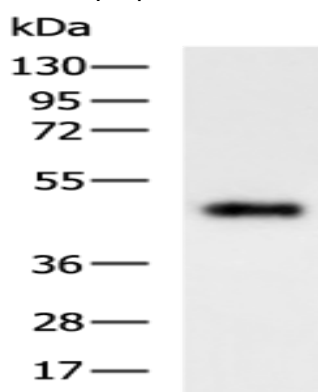
Storage & Shipping: Store at -20°C. Avoid repeated freezing and thawing



Immunohistochemistry analysis of paraffin-embedded Human colorectal cancer tissue using 216537(GPA33 Antibody) at a dilution of 1/70(Cytoplasm and Cell membrane).



Immunohistochemistry analysis of paraffin-embedded Human liver cancer tissue using 216537(Anti-GPA33 Antibody) at a dilution of 1/70.



Gel: 8%SDS-PAGE, Lysate: 40 μ g;
Lane: Mouse small intestines tissue lysate;
Primary antibody: 216537(GPA33 Antibody) at dilution 1/1000;
Secondary antibody: HRP-conjugated Goat anti rabbit IgG at 1/5000 dilution;
Exposure time: 1 minute