

## GOT1 RABBIT PAB

**Cat.#:** S217190

**Product Name:** Anti-GOT1 Rabbit Polyclonal Antibody

**Synonyms:** cCAT; GIG18; cAspAT; ASTQTL1

**UNIPROT ID:** P17174 (Gene Accession - BC000498 )

**Background:** Glutamic-oxaloacetic transaminase is a pyridoxal phosphate-dependent enzyme which exists in cytoplasmic and mitochondrial forms, GOT1 and GOT2, respectively. GOT plays a role in amino acid metabolism and the urea and tricarboxylic acid cycles. The two enzymes are homodimeric and show close homology.

**Immunogen:** Fusion protein of human GOT1

**Applications:** ELISA, WB, IHC

**Recommended Dilutions:** IHC: 50-200;WB: 1000-5000;ELISA: 2000-10000

**Host Species:** Rabbit

**Clonality:** Rabbit Polyclonal

**Isotype:** Immunogen-specific rabbit IgG

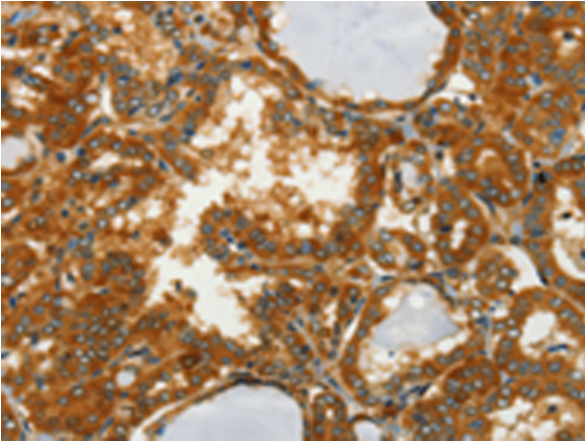
**Purification:** Antigen affinity purification

**Species Reactivity:** Human, Mouse, Rat

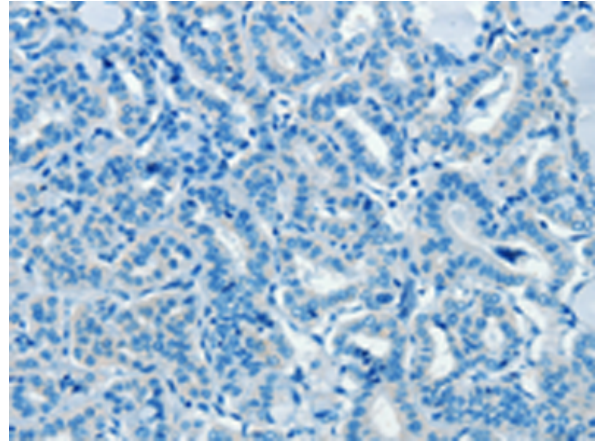
**Constituents:** PBS (without Mg<sup>2+</sup> and Ca<sup>2+</sup>), pH 7.4, 150 mM NaCl, 0.05% Sodium Azide and 40% glycerol

**Research Areas:** Metabolism, Cancer

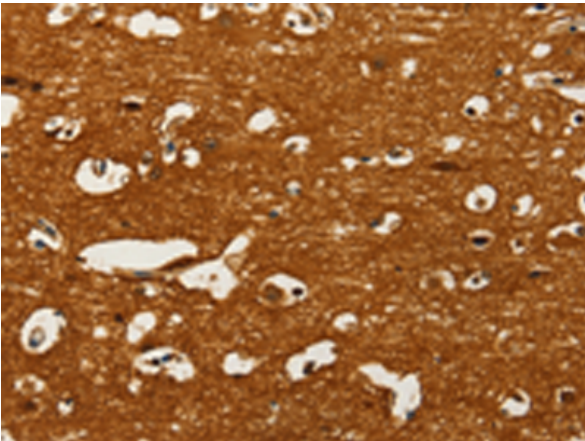
**Storage & Shipping:** Store at -20°C. Avoid repeated freezing and thawing



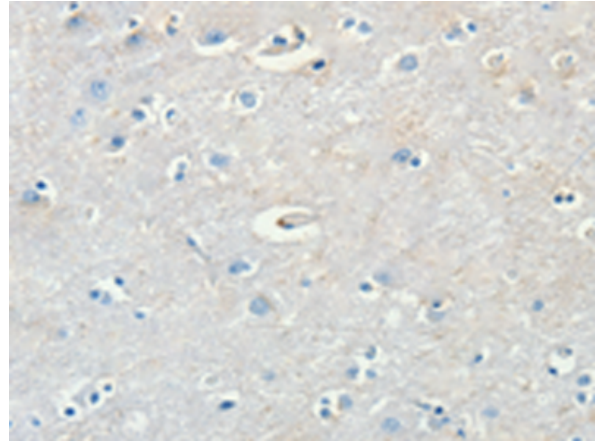
Immunohistochemistry analysis of paraffin embedded Human thyroid cancer tissue using 217190(GOT1 Antibody) at a dilution of 1/50(Cytoplasm).



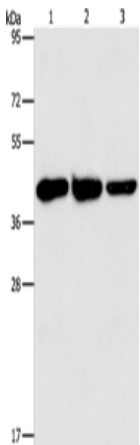
In comparison with the IHC on the left, the same paraffin-embedded Human thyroid cancer tissue is first treated with the fusion protein and then with 217190(Anti-GOT1 Antibody) at dilution 1/50.



The image on the left is immunohistochemistry of paraffin-embedded Human brain tissue using 217190(Anti-GOT1 Antibody) at a dilution of 1/50.



In comparison with the IHC on the left, the same paraffin-embedded Human brain tissue is first treated with fusion protein and then with D221954(Anti-GOT1 Antibody) at dilution 1/50.



Gel: 15%SDS-PAGE, Lysate: 40 µg;  
 Lane 1-3: Human normal liver tissue, mouse brain tissue, Mouse heart tissue;  
 Primary antibody: 217190(GOT1 Antibody) at dilution 1/1600;  
 Secondary antibody: Goat anti rabbit IgG at 1/8000 dilution;  
 Exposure time: 5 seconds



# Product Description

Pioneering GTPase and Oncogene Product Development since 2010

---