

## GNL3 RABBIT PAB

**Cat.#:** S211400

**Product Name:** Anti-GNL3 Rabbit Polyclonal Antibody

**Synonyms:** NS; E2IG3; NNP47; C77032

**UNIPROT ID:** Q9BVP2 (Gene Accession - BC001024 )

**Background:** The protein encoded by this gene may interact with p53 and may be involved in tumorigenesis. The encoded protein also appears to be important for stem cell proliferation. This protein is found in both the nucleus and nucleolus. Three transcript variants encoding two different isoforms have been found for this gene.

**Immunogen:** Fusion protein of human GNL3

**Applications:** ELISA, WB, IHC

**Recommended Dilutions:** IHC: 50-200;WB: 500-2000;ELISA: 2000-5000

**Host Species:** Rabbit

**Clonality:** Rabbit Polyclonal

**Isotype:** Immunogen-specific rabbit IgG

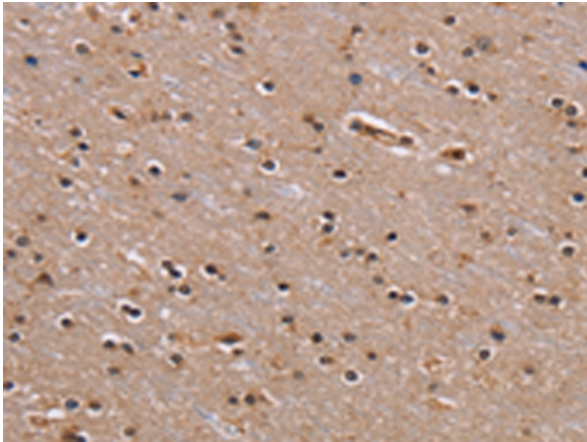
**Purification:** Antigen affinity purification

**Species Reactivity:** Human

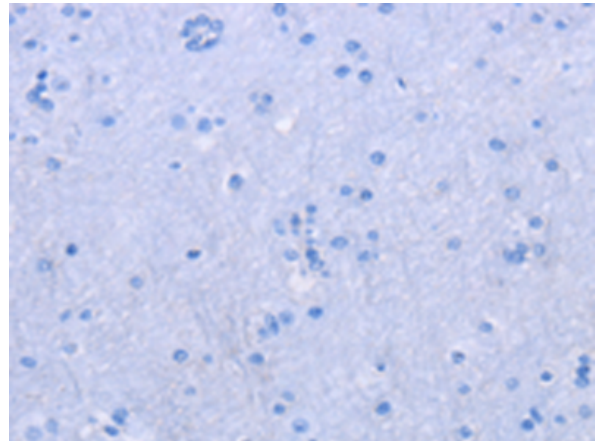
**Constituents:** PBS (without Mg<sup>2+</sup> and Ca<sup>2+</sup>), pH 7.4, 150 mM NaCl, 0.05% Sodium Azide and 40% glycerol

**Research Areas:** Neuroscience, Stem Cells, Developmental Biology

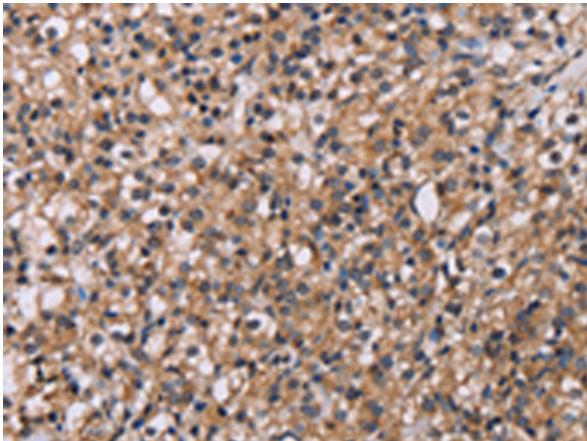
**Storage & Shipping:** Store at -20°C. Avoid repeated freezing and thawing



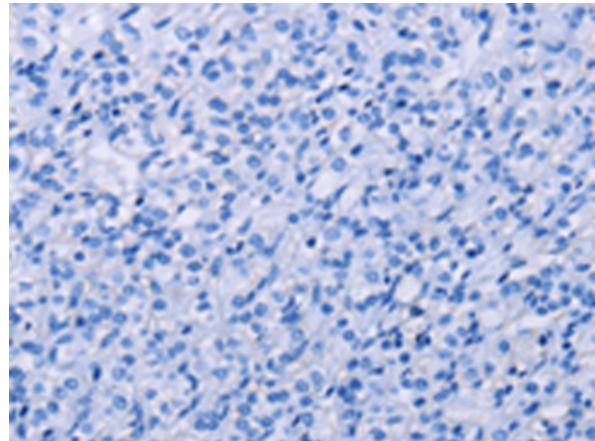
Immunohistochemistry analysis of paraffin embedded Human brain tissue using 211400(GNL3 Antibody) at a dilution of 1/60(Nucleus).



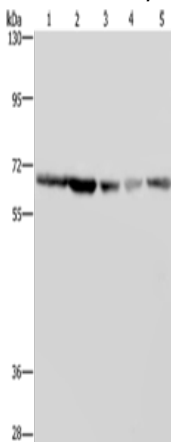
In comparison with the IHC on the left, the same paraffin-embedded Human brain tissue is first treated with the fusion protein and then with 211400(Anti-GNL3 Antibody) at dilution 1/60.



The image on the left is immunohistochemistry of paraffin-embedded Human prostate cancer tissue using 211400(Anti-GNL3 Antibody) at a dilution of 1/60.



In comparison with the IHC on the left, the same paraffin-embedded Human prostate cancer tissue is first treated with fusion protein and then with D122792(Anti-GNL3 Antibody) at dilution 1/60.



Gel: 6%SDS-PAGE, Lysate: 40 µg;  
Lane 1-5: K562 cells, HeLa cells, LoVo cells, 293T cells, Raji cells;  
Primary antibody: 211400(GNL3 Antibody) at dilution 1/300;  
Secondary antibody: Goat anti rabbit IgG at 1/8000 dilution;  
Exposure time: 5 seconds



# Product Description

Pioneering GTPase and Oncogene Product Development since 2010

---