

GNE RABBIT MAB

Cat.#: N262276

Product Name: Anti-GNE Rabbit Monoclonal Antibody

Synonyms: NM; DMRV; IBM2; Uae1; GLCNE

UNIPROT ID: Q9Y223

Background: Regulates and initiates biosynthesis of N-acetylneuraminic acid (NeuAc), a precursor of sialic acids. Plays an essential role in early development. Required for normal sialylation in hematopoietic cells. Sialylation is implicated in cell adhesion, signal transduction, tumorigenicity and metastatic behavior of malignant cells.

Immunogen: A synthetic peptide of human GLCNE

Applications: WB,IP

Recommended Dilutions: WB: 1/500-1/1000 IP: 1/20

Host Species: Rabbit

Clonality: Rabbit Monoclonal

Clone ID: R05-7A8

MW: Calculated MW: 79 kDa; Observed MW: 75 kDa

Isotype: IgG

Purification: Affinity Purified

Species Reactivity: Human

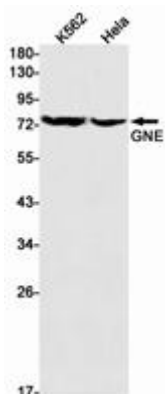
Conjugation: Unconjugated

Modification: Unmodified

Constituents: PBS (without Mg²⁺ and Ca²⁺), pH 7.3 containing 50% glycerol, 0.5% BSA and 0.02% sodium azide

Research Areas: Cardiovascular

Storage & Shipping: Store at -20°C. Avoid repeated freezing and thawing



Western blot analysis of GNE in K562, HeLa lysates using GNE antibody.



Product Description

Pioneering GTPase and Oncogene Product Development since 2010
