

GNAI1 RABBIT PAB

Cat.#: S219350

Product Name: Anti-GNAI1 Rabbit Polyclonal Antibody

Synonyms: Gi

UNIPROT ID: P63096 (Gene Accession - BC026326)

Background: Guanine nucleotide binding proteins are heterotrimeric signal-transducing molecules consisting of alpha, beta, and gamma subunits. The alpha subunit binds guanine nucleotide, can hydrolyze GTP, and can interact with other proteins. The protein encoded by this gene represents the alpha subunit of an inhibitory complex. The encoded protein is part of a complex that responds to beta-adrenergic signals by inhibiting adenylate cyclase. Two transcript variants encoding different isoforms have been found for this gene.

Immunogen: Fusion protein of human GNAI1

Applications: ELISA, WB, IHC

Recommended Dilutions: IHC: 100-200;WB: 1000-5000;ELISA: 5000-10000

Host Species: Rabbit

Clonality: Rabbit Polyclonal

Isotype: Immunogen-specific rabbit IgG

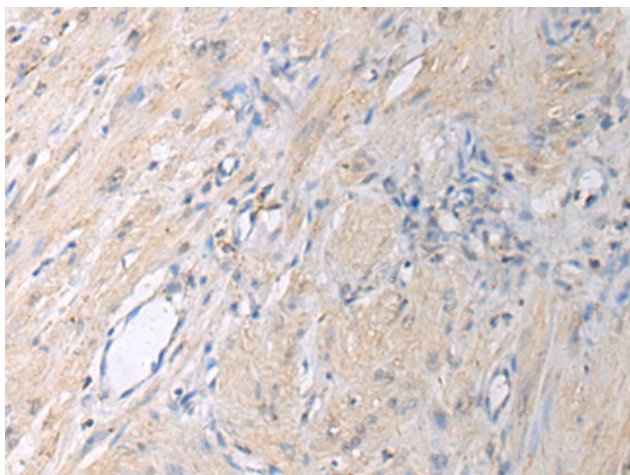
Purification: Antigen affinity purification

Species Reactivity: Human, Mouse, Rat

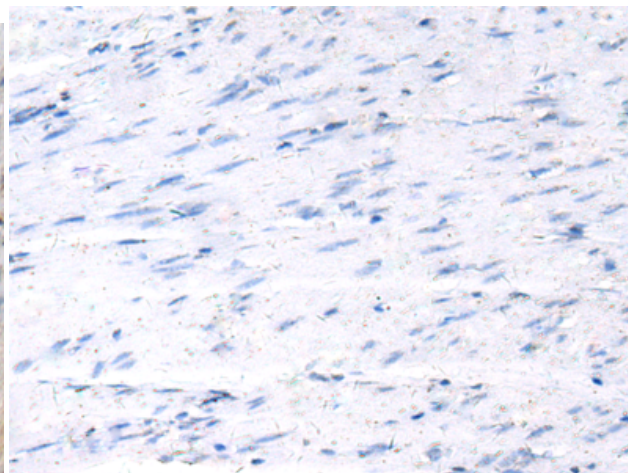
Constituents: PBS (without Mg²⁺ and Ca²⁺), pH 7.4, 150 mM NaCl, 0.05% Sodium Azide and 40% glycerol

Research Areas: Signal Transduction

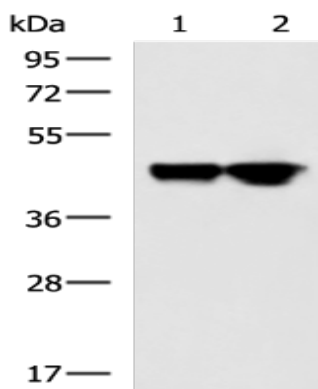
Storage & Shipping: Store at -20°C. Avoid repeated freezing and thawing



Immunohistochemistry analysis of paraffin embedded Human gastric cancer tissue using 219350(GNAI1 Antibody) at a dilution of 1/130(Cytoplasm).



In comparison with the IHC on the left, the same paraffin-embedded Human gastric cancer tissue is first treated with the fusion protein and then with 219350(Anti-GNAI1 Antibody) at dilution 1/130.



Gel: 8%SDS-PAGE, Lysate: 40 μ g;
Lane 1-2: A172 and HeLa cell lysates;
Primary antibody: 219350(GNAI1 Antibody) at dilution 1/2000;
Secondary antibody: HRP-conjugated Goat anti rabbit IgG at 1/5000 dilution;
Exposure time: 1 minute