

## GMFG RABBIT PAB

**Cat.#:** S210890

**Product Name:** Anti-GMFG Rabbit Polyclonal Antibody

**Synonyms:** GMF-GAMMA

**UNIPROT ID:** O60234 (Gene Accession - BC080180 )

**Background:** Glia maturation factor, gamma, also known as GMFG, is a 142 amino acid protein that belongs to the GMF subfamily of the larger actin-binding protein ADF family. GMF-gamma is expressed predominantly in lung, heart and placenta. GMF-gamma is considered a candidate regulatory growth factor protein, mediating both paracrine and autocrine cell-cell interactions. GMF-gamma is phosphorylated at N-terminal serine, and its phosphorylation is enhanced by coexpression of dominant active Rac 1 and Cdc42. GMF-gamma expression is significantly increased in a cardiac ischemia/reperfusion model where inflammation and angiogenesis take place actively. As a regulator of actin-based cellular functions, GMF-gamma may provide a novel approach to modulate the pathophysiology of cardiovascular diseases. GMF-gamma is primarily found in proliferative and differentiative organs.

**Immunogen:** Fusion protein of human GMFG

**Applications:** ELISA, WB, IHC

**Recommended Dilutions:** IHC: 50-200;WB: 500-2000;ELISA: 2000-5000

**Host Species:** Rabbit

**Clonality:** Rabbit Polyclonal

**Isotype:** Immunogen-specific rabbit IgG

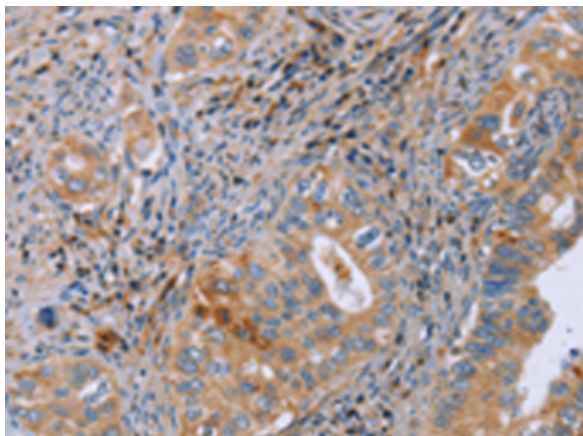
**Purification:** Antigen affinity purification

**Species Reactivity:** Human, Mouse, Rat

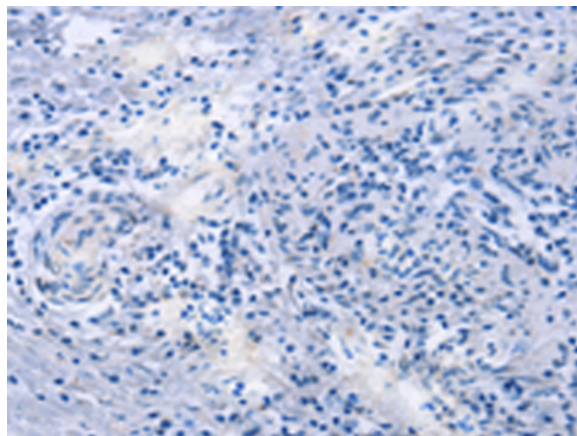
**Constituents:** PBS (without Mg<sup>2+</sup> and Ca<sup>2+</sup>), pH 7.4, 150 mM NaCl, 0.05% Sodium Azide and 40% glycerol

**Research Areas:** Signal Transduction

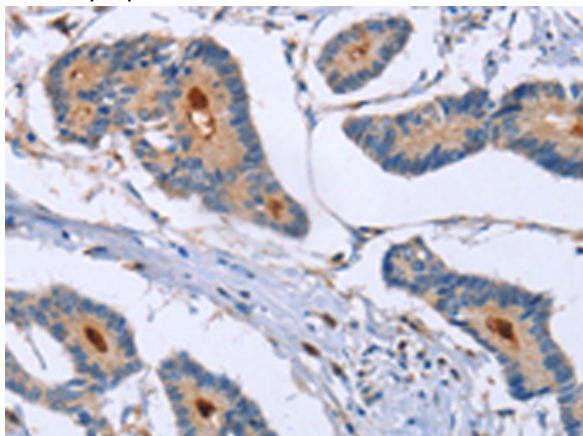
**Storage & Shipping:** Store at -20°C. Avoid repeated freezing and thawing



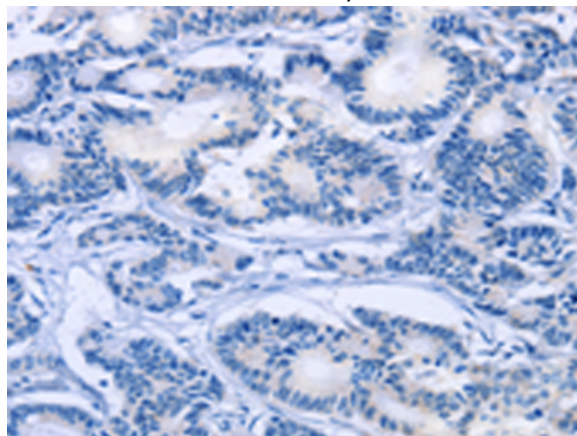
Immunohistochemistry analysis of paraffin embedded Human cervical cancer tissue using 210890(GMFG Antibody) at a dilution of 1/50(Cytoplasm).



In comparison with the IHC on the left, the same paraffin-embedded Human cervical cancer tissue is first treated with the fusion protein and then with 210890(Anti-GMFG Antibody) at dilution 1/50.



The image on the left is immunohistochemistry of paraffin-embedded Human colon cancer tissue using 210890(Anti-GMFG Antibody) at a dilution of 1/50.



In comparison with the IHC on the left, the same paraffin-embedded Human colon cancer tissue is first treated with fusion protein and then with D121824(Anti-GMFG Antibody) at dilution 1/50.



Gel: 10%SDS-PAGE, Lysate: 40 µg;  
Lane 1-2: Mouse heart tissue, human fetal brain tissue;  
Primary antibody: 210890(GMFG Antibody) at dilution 1/1142;  
Secondary antibody: Goat anti rabbit IgG at 1/8000 dilution;  
Exposure time: 10 seconds



# Product Description

Pioneering GTPase and Oncogene Product Development since 2010

---