

## GMFB RABBIT PAB

**Cat.#:** S222458

**Product Name:** Anti-GMFB Rabbit Polyclonal Antibody

**Synonyms:** GMF

**UNIPROT ID:** P60983 (Gene Accession - NP\_004115 )

**Background:** Predicted to enable Arp2/3 complex binding activity. Predicted to be involved in actin filament debranching and negative regulation of Arp2/3 complex-mediated actin nucleation. Predicted to act upstream of or within learning and locomotory behavior.

**Immunogen:** Synthetic peptide of human GMFB

**Applications:** ELISA, IHC

**Recommended Dilutions:** IHC: 50-100; ELISA: 5000-10000

**Host Species:** Rabbit

**Clonality:** Rabbit Polyclonal

**Isotype:** Immunogen-specific rabbit IgG

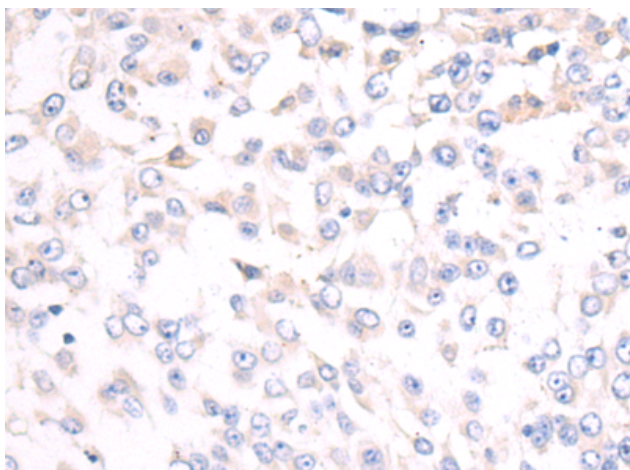
**Purification:** Antigen affinity purification

**Species Reactivity:** Human, Mouse, Rat

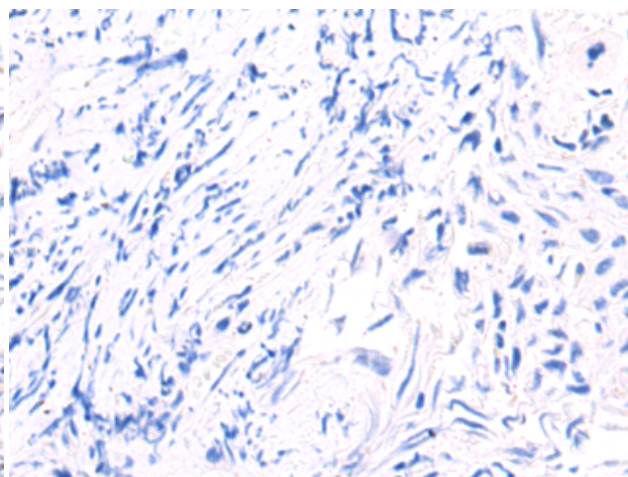
**Constituents:** PBS (without Mg<sup>2+</sup> and Ca<sup>2+</sup>), pH 7.4, 150 mM NaCl, 0.05% Sodium Azide and 40% glycerol

**Research Areas:** Neuroscience

**Storage & Shipping:** Store at -20°C. Avoid repeated freezing and thawing



Immunohistochemistry analysis of paraffin embedded Human bladder cancer tissue using 222458(GMFB Antibody) at a dilution of 1/50(Cytoplasm).



In comparison with the IHC on the left, the same paraffin-embedded Human bladder cancer tissue is first treated with the synthetic peptide and then with 222458(Anti-GMFB Antibody) at dilution 1/50.