

GLYPICAN 1 RABBIT MAB

Cat.#: N261671

Product Name: Anti-Glypican 1 Rabbit Monoclonal Antibody

Synonyms: glypican

UNIPROT ID: P35052

Background: Cell surface proteoglycan that bears heparan sulfate.

Immunogen: A synthetic peptide of human Glypican 1/GPC1

Applications: WB, ICC/IF

Recommended Dilutions: WB: 1/500-1/1000 IF: 1/50-1/200

Host Species: Rabbit

Clonality: Rabbit Monoclonal

Clone ID: R03-2E8

MW: Calculated MW: 62 kDa; Observed MW: 55 kDa

Isotype: IgG

Purification: Affinity Purified

Species Reactivity: Human

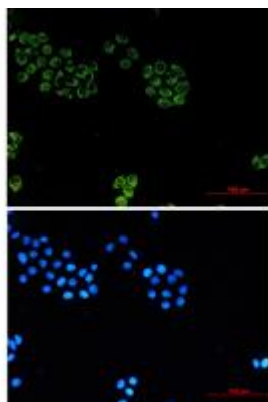
Conjugation: Unconjugated

Modification: Unmodified

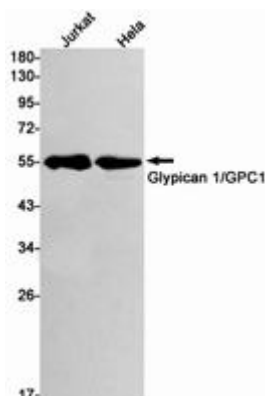
Constituents: PBS (without Mg²⁺ and Ca²⁺), pH 7.3 containing 50% glycerol, 0.5% BSA and 0.02% sodium azide

Research Areas: Neuroscience

Storage & Shipping: Store at -20°C. Avoid repeated freezing and thawing



Immunocytochemistry analysis of Glypican 1/GPC1 (green) in HeLa using Glypican 1/GPC1 antibody, and DAPI (blue)



Western blot analysis of Glypican 1/GPC1 in Jurkat, HeLa lysates using Glypican 1 antibody.



Product Description

Pioneering GTPase and Oncogene Product Development since 2010
